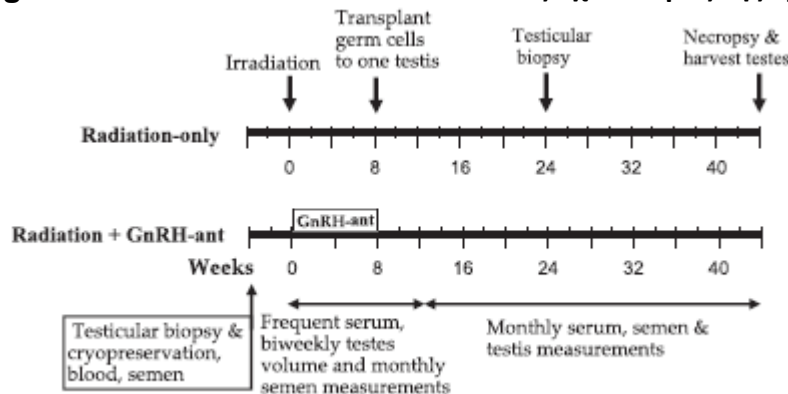


1^ο άρθρο: Hormone suppression with GnRH antagonists promotes spermatogenic recovery from transplanted spermatogonial stem cells in irradiated cynomolgus monkeys

Σημαντικά διαγράμματα αποτελεσμάτων

Figure 1

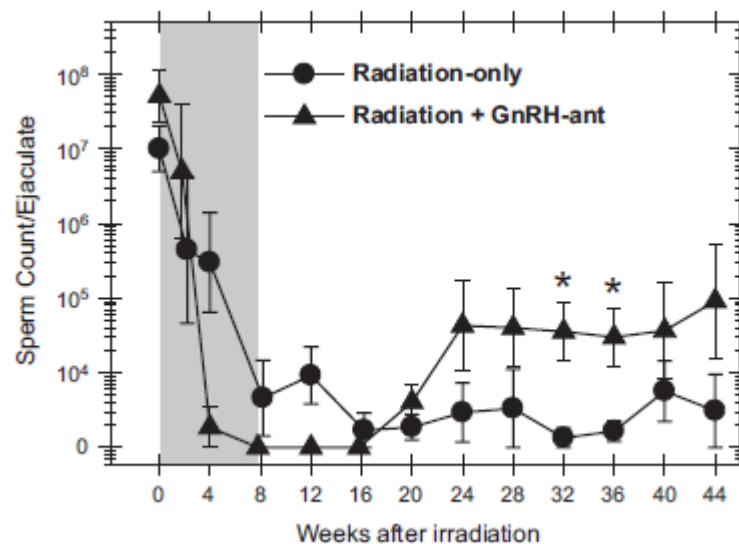
Βασικός σχεδιασμός της εργασίας



Overall design of the main study. Monkeys were evaluated before treatment and periodically after exposure to radiation, hormone suppression and transplantation. Evaluation included sampling of serum and semen, measurements of testis volume and weight and testis biopsies as indicated. All 12 monkeys were given testicular irradiation; six then underwent gonadotropin-releasing hormone antagonist (GnRH-ant)-mediated hormone suppression for 8 weeks, whereas the other six did not. At the end of the 8-week period, all monkeys received autologous transplantation of green fluorescent protein-lentivirus-labelled germ cells into one testis.

Figure 6

Τελικά αποτελέσματα



Treatment with gonadotropin-releasing hormone antagonist (GnRH-ant) stimulates recovery of sperm counts in monkeys transplanted with germ cells. Sperm counts in radiation-only and GnRH-ant-treated irradiated monkeys that received autologous transplantation of testicular cells to one of the testes are shown. The shaded area represents the period of hormone suppression. For averaging log-transformed value, azoospermic counts were set at 1000/mL which is the lower limit of detection of spermatozoa with haemocytometer counting. Recovery of sperm counts was compared between the two groups during the period from week 24 to week 44, and significant ($p < 0.05$) differences are shown by the symbol: *Mann-Whitney U-test.

6^ο άρθρο: Expression of testicular androgen receptor in non-obstructive azoospermia and its change after hormonal therapy.

Σημαντικά διαγράμματα αποτελεσμάτων

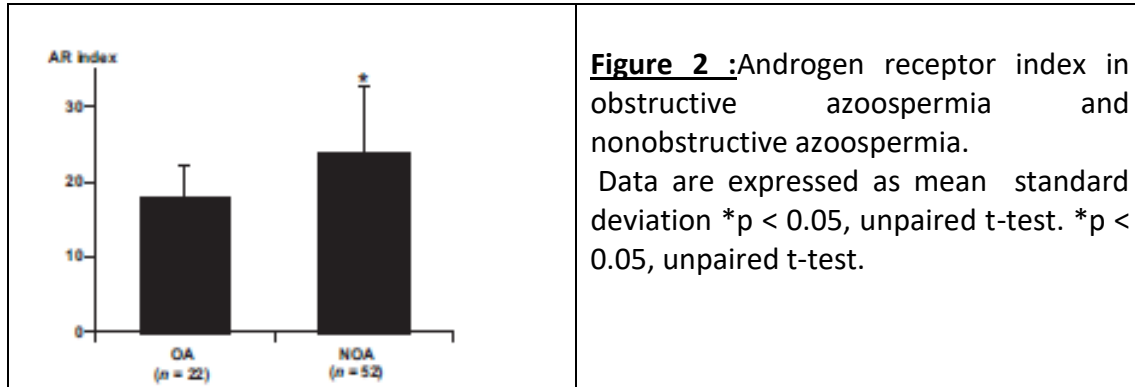


Figure 2 :Androgen receptor index in obstructive azoospermia and nonobstructive azoospermia.

Data are expressed as mean standard deviation *p < 0.05, unpaired t-test. *p < 0.05, unpaired t-test.

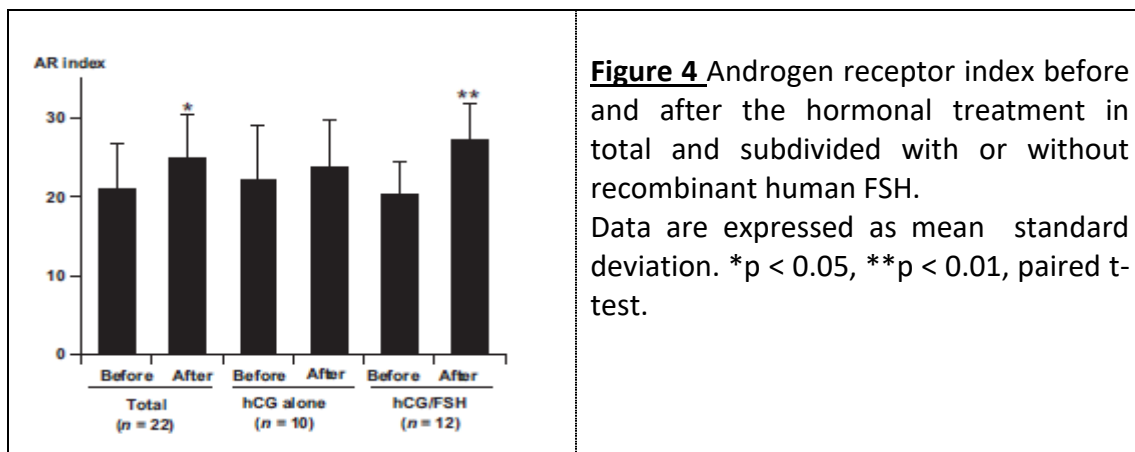


Figure 4 Androgen receptor index before and after the hormonal treatment in total and subdivided with or without recombinant human FSH.

Data are expressed as mean standard deviation. *p < 0.05, **p < 0.01, paired t-test.

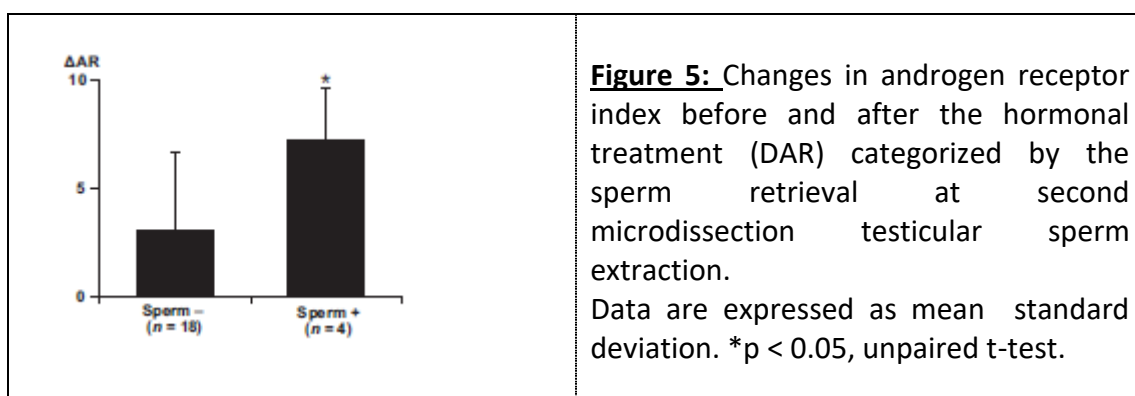
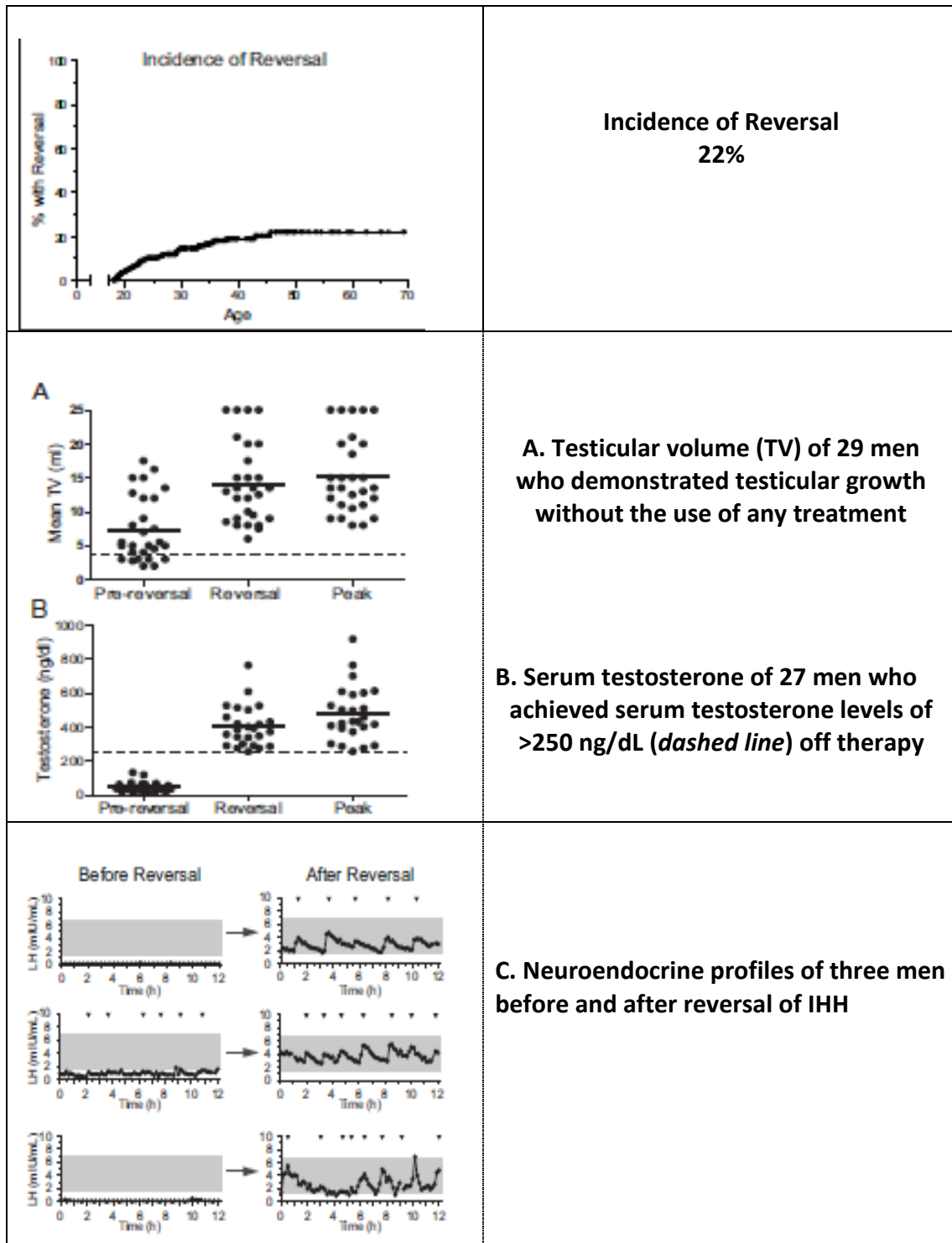


Figure 5: Changes in androgen receptor index before and after the hormonal treatment (ΔAR) categorized by the sperm retrieval at second microdissection testicular sperm extraction.

Data are expressed as mean standard deviation. *p < 0.05, unpaired t-test.

7^ο Άρθρο: Reversal and Relapse of Hypogonadotropic Hypogonadism: Resilience and Fragility of the Reproductive Neuroendocrine System.

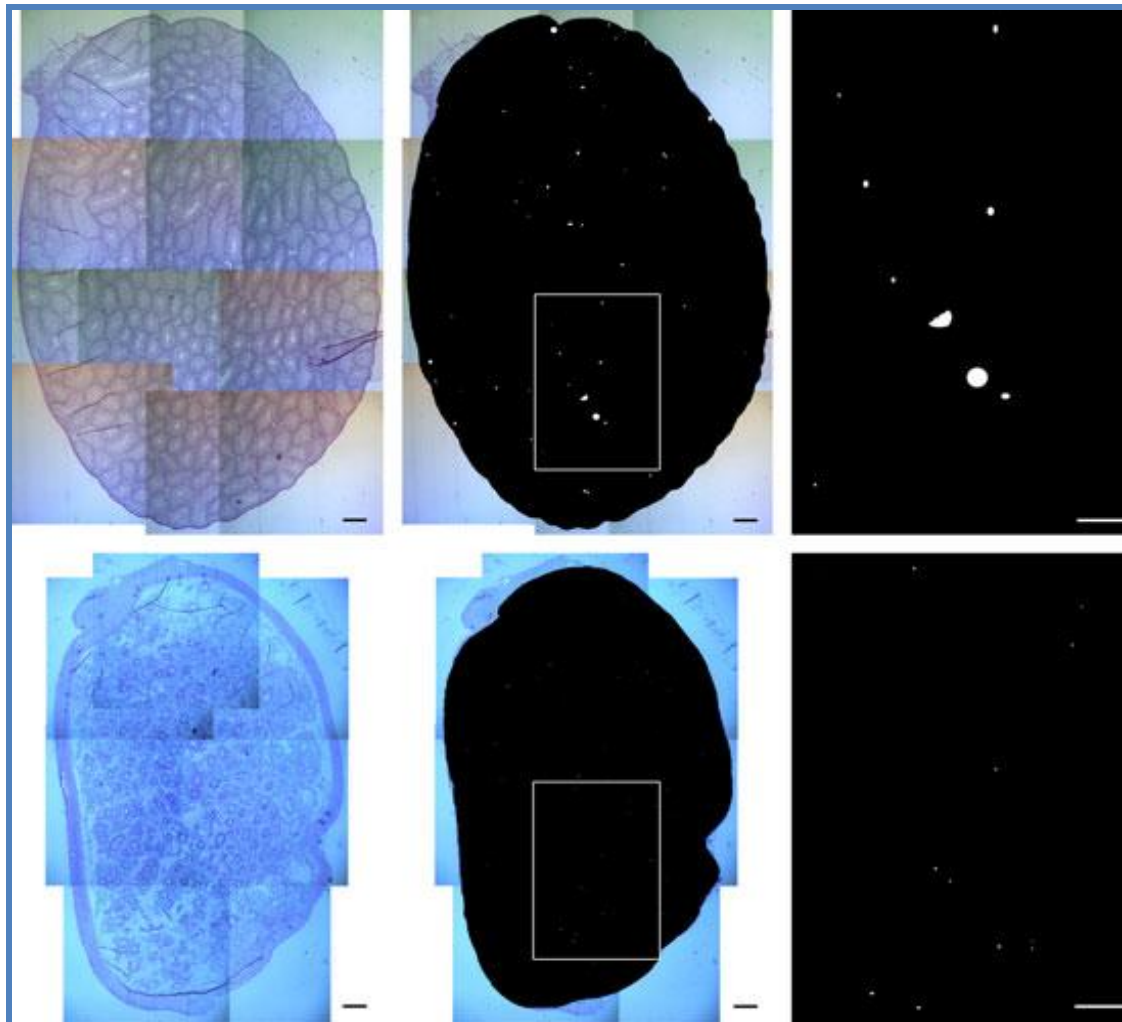
Σημαντικά διαγράμματα αποτελεσμάτων



10ο Άρθρο: Intratesticular T is increased in men with KF-S and may not be released into bloodstream owing to altered testicular vascularization- a preliminary report.

Σημαντικότερα αποτελέσματα

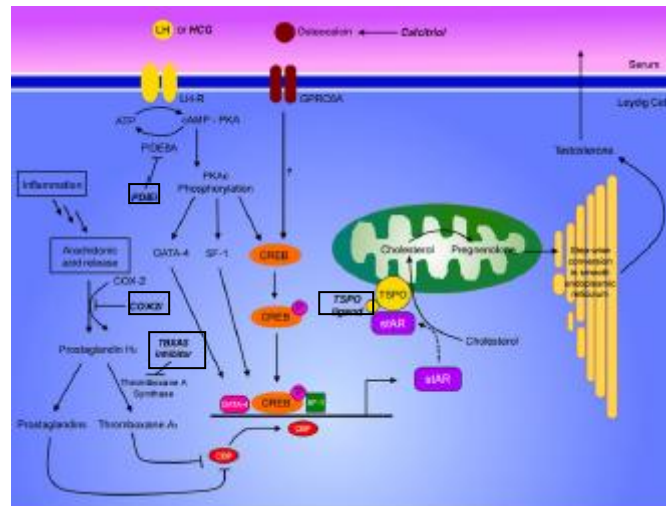
- Η συνολική αγγειακή επιφάνεια ήταν: 262 ± 143 για τα KF και 906 ± 369 για τα υγιή
- Η σχέση επιφάνειας αγγείων/όρχι ήταν: $1.5 \pm 0.3\%$ στα KF και $4.1 \pm 1.3\%$ στα υγιή
- Η επιφάνεια των μεγάλων αγγείων ήταν $867 \mu\text{m}^2$ στα υγιή , ενώ παρόμοια αγγεία δε βρέθηκαν στα KF



Evaluation of testicular cross sections of 40,XY* (A–C) compared with 41,XXY* mice (D–F) for areas covered by blood vessels.

Άρθρο 11^ο: New targets for increasing endogenous testosterone production: clinical implications and review of the literature.

Σημαντική διαφάνεια

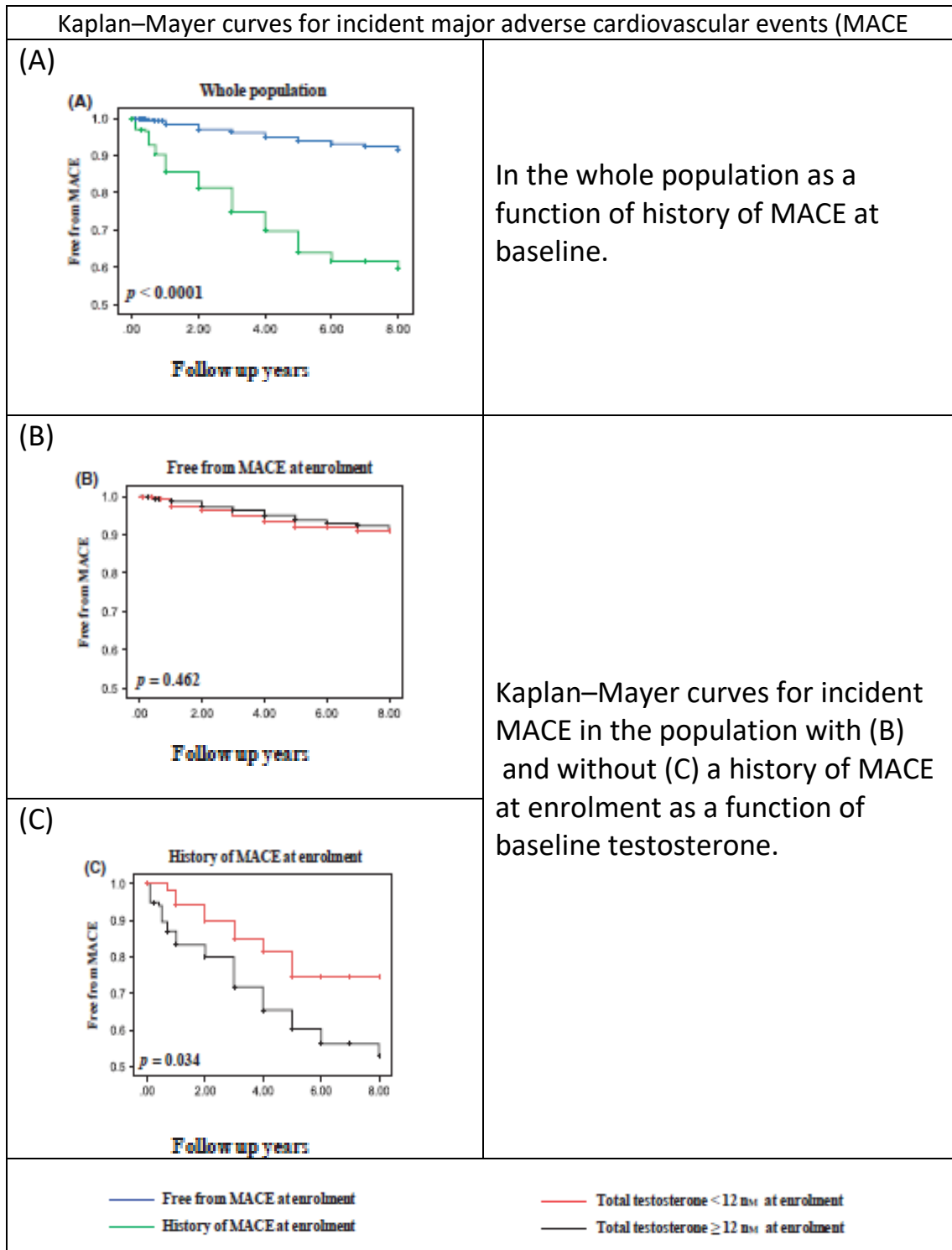


Signalling pathways involved in Leydig cell steroidogenesis and potential targets for enhancing testosterone production (in bold).

Legend:

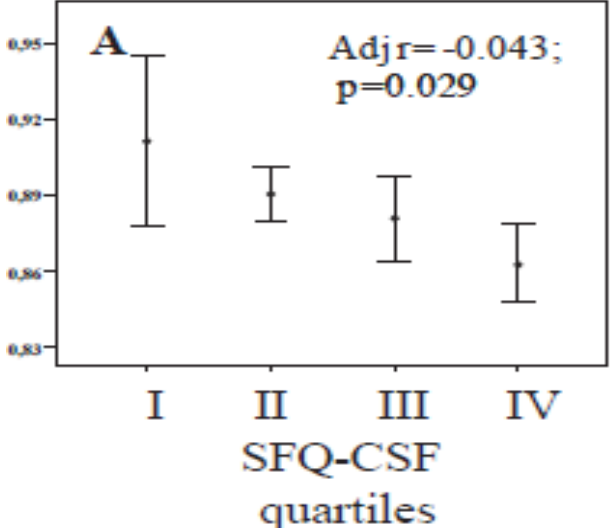
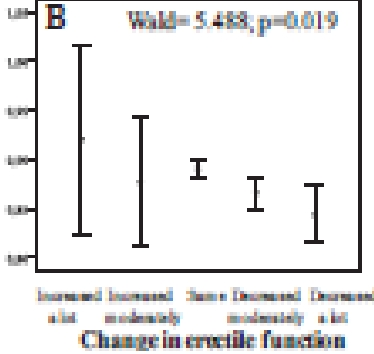
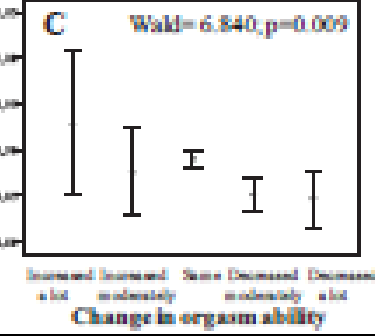
ATP, Adenosine Triphosphate; cAMP, Cyclic Adenosine Monophosphate; CBP, CREB Binding Protein; CREB, cAMP Response Element-Binding Protein; COX-2, Cyclooxygenase 2; COX2i, Cyclooxygenase 2 inhibitor; GATA-4, Transcription Factor GATA4; GPRC6A, G-protein-coupled receptor encoded by GPRC6A; hCG, Human Chorionic Gonadotropin; LH, Luteinizing Hormone; LH-R, LH Receptor; PKA, Protein Kinase A; PKAc, Protein Kinase A Catalytic subunit; SF-1, Steroidogenic Factor 1; stAR, Steroidogenic Acute Regulatory Protein; TBXAS inhibitor, Thromboxane A Synthase inhibitor; TSPO, Translocator Protein.

Άρθρο 12: Low Testosterone syndrome protects subjects with high cardiovascular risk burden from major adverse cardiovascular events



Άρθρο 14: Low Prolactin Is Associated with Sexual Dysfunction and Psychological or Metabolic Disturbances in Middle-Aged and Elderly Men: The European Male Aging Study (EMAS)

Αποτελέσματα

Σχέση επιπέδων PRL (Log_{10}) και σεξουαλικής λειτουργίας-παραμέτρων Μεταβολικού Συνδρόμου	
 <p>A $\text{Adj } r = -0.043$; $p = 0.029$</p> <p>SFQ-CSF quartiles</p>	<p>SFQ: Short Form questionnaire of QoL CSF: Change in Sexual Functioning (1 year)</p>
 <p>B $\text{Wald} = 5.488$; $p = 0.019$</p> <p>Change in erectile function</p>	<p>Erectile function</p>
 <p>C $\text{Wald} = 6.840$; $p = 0.009$</p> <p>Change in orgasm ability</p>	<p>Orgasm ability</p>

<p>D</p> <p>Wald=4.322; p=0.038</p> <p>Increased a lot Increased moderately Same Decreased moderately Decreased a lot</p> <p>Change in morning erections</p>	<p>Morning erections</p>
<p>E</p> <p>Wald=4.618; p=0.032</p> <p>Increased a lot Increased moderately Same Decreased moderately Decreased a lot</p> <p>Change in Overall sexual function</p>	<p>Overall sexual function</p>
<p>C</p> <p>$\beta = -0.411 [-0.759, -0.063]; p = 0.021$</p> <p>0 1 2 3 4 or 5</p> <p># Metabolic syndrome components</p>	<p>Metabolic Syndrome components</p>