

Efficacy and Safety of Longer-Term Administration of Evolocumab (AMG 145) in Patients With Hypercholesterolemia: 52-Week Results From the Open-Label Study of Long-Term Evaluation Against LDL-C (OSLER) Randomized Trial

Michael J. Koren, Robert P. Giugliano, Frederick J. Raal, David Sullivan, Michael Bolognese, Gisle Langslet, Fernando Civeira, Ransi Somaratne, Patric Nelson, Thomas Liu, Rob Scott, Scott M. Wasserman and Marc S. Sabatine

Circulation. published online November 19, 2013;

Circulation is published by the American Heart Association, 7272 Greenville Avenue, Dallas, TX 75231

Copyright © 2013 American Heart Association, Inc. All rights reserved.

Print ISSN: 0009-7322. Online ISSN: 1524-4539

The online version of this article, along with updated information and services, is located on the World Wide Web at:

<http://circ.ahajournals.org/content/early/2013/11/17/CIRCULATIONAHA.113.007012>

Data Supplement (unedited) at:

<http://circ.ahajournals.org/content/suppl/2013/11/15/CIRCULATIONAHA.113.007012.DC1.html>

Permissions: Requests for permissions to reproduce figures, tables, or portions of articles originally published in *Circulation* can be obtained via RightsLink, a service of the Copyright Clearance Center, not the Editorial Office. Once the online version of the published article for which permission is being requested is located, click Request Permissions in the middle column of the Web page under Services. Further information about this process is available in the [Permissions and Rights Question and Answer](#) document.

Reprints: Information about reprints can be found online at:
<http://www.lww.com/reprints>

Subscriptions: Information about subscribing to *Circulation* is online at:
<http://circ.ahajournals.org/subscriptions/>

Efficacy and Safety of Longer-Term Administration of Evolocumab (AMG 145) in Patients With Hypercholesterolemia

52-Week Results From the Open-Label Study of Long-Term Evaluation Against LDL-C (OSLER) Randomized Trial

Michael J. Koren, MD; Robert P. Giugliano, MD; Frederick J. Raal, MBBCh, MMED, PhD; David Sullivan, MD; Michael Bolognese, MD; Gisle Langslet, MD; Fernando Civeira, MD; Ransi Somaratne, MD; Patric Nelson, MPH, MBA; Thomas Liu, PhD; Rob Scott, MD; Scott M. Wasserman, MD; Marc S. Sabatine, MD, MPH; for the OSLER Investigators

Background—Evolocumab (AMG 145), a monoclonal antibody against proprotein convertase subtilisin/kexin type 9 (PCSK9), significantly reduced low-density lipoprotein cholesterol (LDL-C) in phase 2 studies of 12 weeks' duration. The longer-term efficacy and safety of PCSK9 inhibition remain undefined.

Methods and Results—Of 1359 randomized and dosed patients in the 4 evolocumab phase 2 parent studies, 1104 (81%) elected to enroll into the Open-Label Study of Long-term Evaluation Against LDL-C (OSLER) study. Regardless of their treatment assignment in the parent study, patients were randomized 2:1 to receive either open-label subcutaneous evolocumab 420 mg every 4 weeks with standard of care (SOC) (evolocumab+SOC, n=736) or SOC alone (n=368). Ninety-two percent of patients in the evolocumab+SOC group and 89% of patients in the SOC group completed 52 weeks of follow-up. Patients who first received evolocumab in OSLER experienced a mean 52.3% [SE, 1.8%] reduction in LDL-C at week 52 ($P<0.0001$). Patients who received 1 of 6 dosing regimens of evolocumab in the parent studies and received evolocumab+SOC in OSLER had persistent LDL-C reductions (mean reduction, 50.4% [SE, 0.8%] at the end of the parent study versus 52.1% [SE, 1.0%] at 52 weeks; $P=0.31$). In patients who discontinued evolocumab on entry into OSLER, LDL-C levels returned to near baseline levels. Adverse events and serious adverse events occurred in 81.4% and 7.1% of the evolocumab+SOC group patients and 73.1% and 6.3% of the SOC group patients, respectively.

Conclusion—Evolocumab dosed every 4 weeks demonstrated continued efficacy and encouraging safety and tolerability over 1 year of treatment in the largest and longest evaluation of a PCSK9 inhibitor in hypercholesterolemic patients to date.

Clinical Trial Registration—URL: <http://clinicaltrials.gov>. Unique identifier: NCT01439880.

(*Circulation*. 2014;129:00-00.)

Key Words: cholesterol, LDL ■ hypercholesterolemia ■ randomized controlled trial ■ serine proteases

Multiple clinical trials over 2 decades, mostly with statins, have shown that progressively more aggressive lowering of low-density lipoprotein cholesterol (LDL-C) leads to lower rates of vascular disease complications.¹ This success has generated interest in developing novel therapies that address the limitations of currently available hypercholesterolemia treatments and explore the effects of reducing serum LDL-C levels below those achievable with statin therapy alone.

Clinical Perspective on p XXX

Proprotein convertase subtilisin/kexin type 9 (PCSK9) inhibition has emerged as a promising new approach for treating hypercholesterolemia.² Monoclonal antibodies against PCSK9 have been shown to reduce LDL-C substantially, either with or without concomitant statin therapy.³⁻¹⁰ Evolocumab, a fully human monoclonal antibody against PCSK9, reduced LDL-C

Received October 18, 2013; accepted November 4, 2013.

From the Jacksonville Center for Clinical Research, Jacksonville, FL (M.J.K.); TIMI Study Group, Division of Cardiovascular Medicine, Brigham and Women's Hospital and Harvard Medical School, Boston, MA (R.P.G., M.S.S.); Carbohydrate and Lipid Metabolism Research Unit, Division of Endocrinology and Metabolism, Department of Medicine, Faculty of Health Sciences, University of the Witwatersrand, Johannesburg, South Africa (F.J.R.); Department of Clinical Biochemistry, Royal Prince Alfred Hospital, Camperdown, Australia (D.S.); Bethesda Health Research Center, Bethesda, MD (M.B.); Lipid Clinic, Oslo University Hospital, Oslo, Norway (G.L.); Hospital Universitario Miguel Servet, Zaragoza, Spain (F.C.); and Amgen Inc, Thousand Oaks, CA (R.S., P.N., T.L., R.S., S.M.W.).

The online-only Data Supplement is available with this article at <http://circ.ahajournals.org/lookup/suppl/doi:10.1161/CIRCULATIONAHA.113.007012/-/DC1>.

Correspondence to Michael J Koren, MD, FACC, CPI, Jacksonville Center for Clinical Research, 4085 University Blvd S, Ste 1, Jacksonville, FL 32216. E-mail mkoren@encoredocs.com

© 2013 American Heart Association, Inc.

Circulation is available at <http://circ.ahajournals.org>

DOI: 10.1161/CIRCULATIONAHA.113.007012

up to 65% and showed an encouraging safety and tolerability profile in 4 randomized, placebo-controlled, phase 2 clinical trials in >1300 hypercholesterolemic patients.^{4,5,7,10} To date, the only report evaluating an anti-PCSK9 inhibitor for >12 weeks involved 8 patients with homozygous familial hypercholesterolemia.¹¹ No previous reports have comprehensively evaluated the efficacy and safety of any PCSK9 inhibitor through 1 year or in a large and diverse patient population.

To provide such data on evolocumab, patients completing any of the 4 phase 2 trials could participate in the Open-Label Study of Long-term Evaluation Against LDL-C (OSLER), a global, multicenter, randomized, controlled, open-label extension trial in which investigators could adjust background standard-of-care (SOC) therapy, including medications, after 12 weeks. The present analysis reports the efficacy and safety results for hypercholesterolemic patients treated in OSLER for 1 year.

Methods

Study Design and Patients

OSLER was a global study conducted at 156 study centers that participated in 1 or more of the 4 phase 2 studies (Monoclonal Antibody Against PCSK9 to Reduce Elevated LDL-C in Subjects Currently Not Receiving Drug Therapy for Easing Lipid Levels [MENDEL], monotherapy; LDL-C Assessment With PCSK9 Monoclonal Antibody Inhibition Combined With Statin Therapy–Thrombolysis in Myocardial Infarction 57 [LAPLACE-TIMI 57], combination therapy with statins with or without ezetimibe; Goal Achievement After Utilizing an Anti-PCSK9 Antibody in Statin Intolerant Subjects [GAUSS], statin-intolerant patients; and Reduction of LDL-C With PCSK9 Inhibition in Heterozygous Familial Hypercholesterolemia Disorder [RUTHERFORD], patients with heterozygous familial

hypercholesterolemia) between October 2011 and June 2012. Details of the parent trials have been published previously.^{4,5,7,10,12} Patients completing any evolocumab phase 2 parent study could enroll in OSLER provided that they did not experience a treatment-related serious adverse event (AE) that led to discontinuation of investigational product in the phase 2 parent study or were anticipated to require unblinded lipid measurements and/or adjustment of background lipid-regulating therapy during the first 12 weeks of OSLER participation. An independent ethics committee or institutional review board approved the protocol, and all patients provided written informed consent before enrollment in the extension study.

Schedule of Events

Randomization of eligible patients occurred ideally at or within 3 days of the phase 2 parent end-of-study visit. Patients were randomized in a 2:1 fashion to 1 of 2 treatment groups, regardless of their treatment assignments during the phase 2 parent study: either evolocumab 420 mg SC every 4 weeks plus SOC (evolocumab+SOC; n=736) or SOC alone (n=368). The SOC-only group served as the control arm (Figure 1). SOC was based on local guidelines for the treatment of hypercholesterolemia. After the first 12 weeks, central laboratory lipid results were unblinded, and investigators could adjust SOC therapies in both arms. Downtitration of statins continued from a phase 2 parent study was prohibited if the decision was based on unblinded LDL-C values obtained after week 12.

Study visits occurred every 4 weeks for patients randomized to evolocumab+SOC. After their week 4 visits, patients randomized to SOC returned to the study center only for quarterly visits thereafter (weeks 12, 24, 36, 48, and 52); all other interval visits (every 4 weeks) were conducted over the phone. Sites collected blood samples at week 4 and at the quarterly visits.

Efficacy and Safety End Points

The primary efficacy objective was to characterize the effects of longer-term administration of evolocumab as assessed by LDL-C,

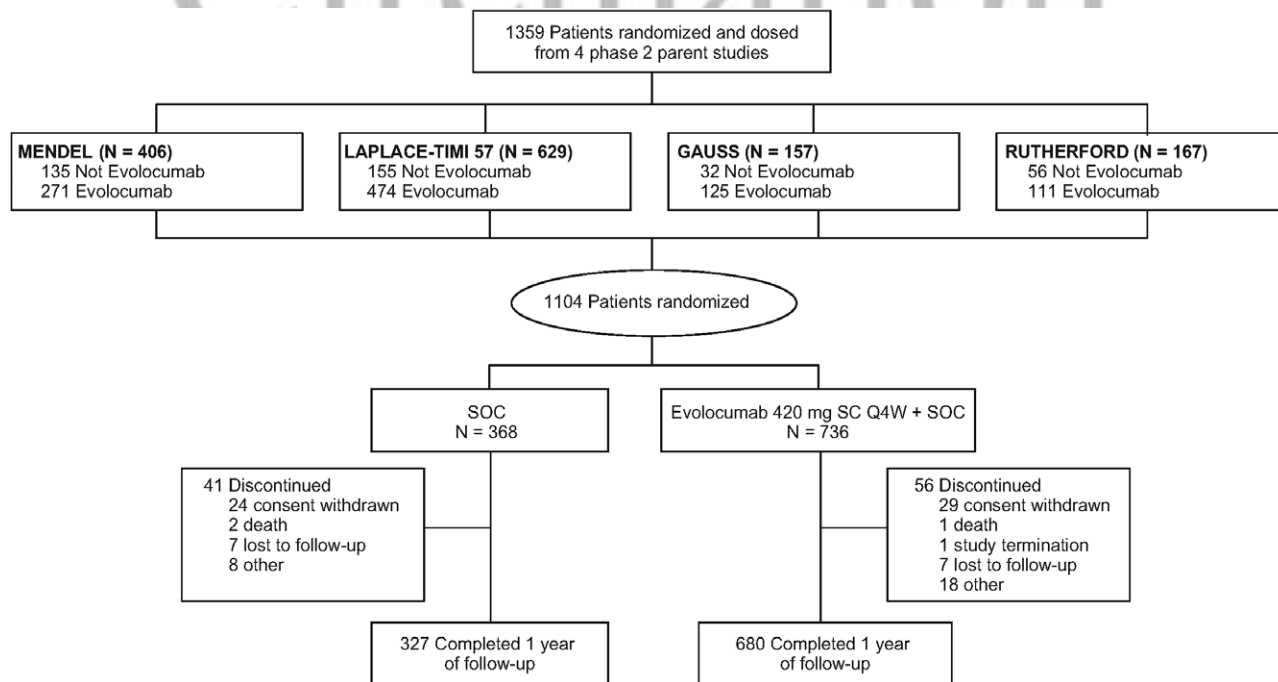


Figure 1. The Open-Label Study of Long-term Evaluation Against LDL-C (OSLER): patient disposition. GAUSS indicates Goal Achievement After Utilizing an Anti-PCSK9 Antibody in Statin Intolerant Subjects; LAPLACE-TIMI 57, LDL-C Assessment With PCSK9 Monoclonal Antibody Inhibition Combined With Statin Therapy–Thrombolysis in Myocardial Infarction 57; MENDEL, Monoclonal Antibody Against PCSK9 to Reduce Elevated LDL-C in Subjects Currently Not Receiving Drug Therapy for Easing Lipid Levels; Q4W, every 4 weeks; RUTHERFORD, Reduction of LDL-C With PCSK9 Inhibition in Heterozygous Familial Hypercholesterolemia Disorder; SC, subcutaneous; and SOC, standard of care.

non-high-density lipoprotein cholesterol (non-HDL-C), apolipoprotein (Apo) B, ratio of total cholesterol to HDL-C, and ApoB/ApoA1 ratio in patients with hypercholesterolemia. The primary safety objective was to characterize the safety and tolerability of longer-term administration of evolocumab. Safety end points included the incidence of AEs, serious AEs, and AEs leading to discontinuation of investigational product. Other safety end points included the incidence of creatine kinase and liver function test abnormalities and the incidence and percentage of patients who developed anti-evolocumab antibodies (binding or neutralizing). Clinical events were adjudicated by an independent Clinical Events Committee and included cardiovascular and muscle-related events (see the Appendix in the online-only Data Supplement). An independent Data Monitoring Committee regularly reviewed data from this and other ongoing evolocumab studies, prepared by an external biostatistical group.

Laboratory Methods

Plasma lipids, ApoA1, ApoB, and lipoprotein(a) were measured after a fast of ≥ 9 hours on day 1 of open-label treatment (end-of-study visit for phase 2 parent study), at week 4, and every 12 weeks (weeks 12, 24, 36, 48, 52) for 1 year. LDL-C values with preparative ultracentrifugation¹³ were obtained on day 1 and at 12-week intervals. All LDL-C values reported are based on the preparative ultracentrifugation method except those at week 4. Safety laboratory tests were performed by Covance Laboratories (Indianapolis, IN, or Geneva, Switzerland) and included serum chemistry, hematology, urinalysis, high-sensitivity C-reactive protein, and hemoglobin A_{1c}.

Analyses of serum lipids [total cholesterol, HDL-C, LDL-C, non-HDL-C, triglycerides, ApoB, ApoA1, and lipoprotein(a)] were performed by a central laboratory, Medpace Reference Laboratories (Cincinnati, OH, and Leuven, Belgium). LDL-C and very-low-density lipoprotein cholesterol were measured after preparative ultracentrifugation (β quantification).¹⁴ LDL-C was also calculated with the Friedewald formula.¹⁵ Binding and neutralizing anti-evolocumab antibodies were assayed as reported previously.³ Additional details of laboratory methods are included in the Appendix in the online-only Data Supplement.

Statistical Analysis

For all end points, data were summarized for patients by the randomized treatment group. Patients were further categorized according to whether they were randomized to evolocumab in the phase 2 parent studies. AEs were coded with the use of the *Medical Dictionary for Regulatory Activities*, version 16.0. Summary statistics for continuous variables included the number of patients, mean, median, standard deviation or standard error, 25th percentile, 75th percentile, minimum, and maximum. For categorical variables, the frequency and percentage were presented. All data analyses were based on observed values.

For continuous analyses, a 1-sample *t* test or Wilcoxon signed rank test was used for the comparisons with parent baseline and a 2-sample *t* test or Wilcoxon rank sum test was used for between-group comparisons. For categorical analyses, a χ^2 test was used to compare between treatment groups. All statistical tests were based on a 2-sided significance level of 0.05 without multiplicity adjustment. All statistical analyses were performed with SAS version 9.3.

Results

Patients

A total of 1104 patients enrolled in OSLER (81.2% of those randomized and dosed in phase 2 parent studies); most (88.0%) enrolled within 3 days of their last phase 2 parent study visits. Of the 1104 patients, 736 were randomized to receive evolocumab 420 mg every 4 weeks subcutaneously+SOC and 368 were randomized to receive SOC only for 52 weeks (Figure 1). Ninety-two percent of patients in the evolocumab+SOC group

completed 52 weeks of follow-up, and 89% of patients in the SOC group completed 52 weeks of follow-up.

Overall, 55.3% of patients were female and 88.0% were white. Mean age was 56 years [SD, 12 years], and 11.4% of patients had a documented history of statin intolerance. Mean LDL-C at baseline of the pooled phase 2 parent studies was 3.6 mmol/L [SD, 1.0 mmol/L] (141.1 mg/dL [SD, 39.4 mg/dL]). OSLER participants included 210 patients (19.0%) with established coronary artery disease, 109 (9.9%) with type 2 diabetes mellitus, 297 (26.9%) with a family history of CHD, and 425 (38.5%) with metabolic syndrome (Table 1 and Table I in the online-only Data Supplement). A total of 691 patients (62.6%) were on statin therapy at baseline, and of those 691 patients, 295 (42.7%) received intensive statin therapy (defined as daily doses of atorvastatin ≥ 40 mg, rosuvastatin ≥ 20 mg, simvastatin 80 mg, or any statin plus ezetimibe). The proportion of patients who received statin therapy at baseline was higher in the evolocumab+SOC group (64.9%) compared with the SOC group (57.9%).

Only 4 of 736 patients (<1%) receiving evolocumab either discontinued a statin or switched from an intensive to a non-intensive statin regimen, and only 2 of 368 patients (<1%) in the SOC-only group discontinued statin use. A total of 20 patients (2.7%) in the evolocumab+SOC group and 33 patients (9.0%) in the SOC-only group initiated statin therapy during OSLER. Another 25 patients (6.8%) in the SOC group and 14 patients (1.9%) in the evolocumab+SOC group started taking nonstatin lipid-lowering therapies during OSLER, and 5 patients (1.4%) in the SOC group and 6 patients (0.8%) in the evolocumab+SOC group continued taking nonstatin lipid-lowering therapies during OSLER.

Efficacy Outcomes

Patients not taking evolocumab in the phase 2 parent study had large initial LDL-C reductions determined at 12 weeks after starting evolocumab treatment in OSLER (51.8% [SE, 1.6%] reduction from the parent study baseline; $P < 0.0001$ versus baseline), with reductions maintained over the 52-week study period (52.3% [SE, 1.8%] at week 52; $P < 0.0001$ versus baseline; Figure 2 and Table II in the online-only Data Supplement). Patients who received 1 of 6 dosing regimens of evolocumab (70, 105, 140 mg every 2 weeks or 280, 350, 420 mg every 4 weeks) in the parent studies and received evolocumab 420 mg every 4 weeks+SOC in OSLER had persistent reductions in LDL-C (compared with baseline, from 50.4% [SE, 0.8%] at the end of the parent study to 52.1% [SE, 1.0%] at 52 weeks; paired *t* test, $P = 0.31$). For patients who discontinued evolocumab after random assignment to SOC in OSLER, mean reductions in calculated LDL-C from baseline went from 53.1% [SE, 1.2%] at the start of OSLER to 17.9% [SE, 1.2%] at 4 weeks and then to near baseline levels (5.8% [SE, 1.2%]) within 12 weeks without a rebound effect.

Percentage changes from the phase 2 parent study baseline in other lipid parameters, including ApoB, lipoprotein(a), and triglycerides, are shown in Figure 3 and Table III in the online-only Data Supplement. ApoB and lipoprotein(a) reductions tracked those observed for LDL-C. For HDL-C and ApoA1, patients who continued treatment with evolocumab maintained the observed larger increases for the 52-week treatment period compared with the patients who discontinued

Table 1. Baseline Patient Characteristics

Characteristic	SOC (n=368)	Evolocumab 420 mg Every 4 wk+SOC (n=736)
Age, mean (SD), y	56.7 (11.7)	56.1 (11.9)
Female sex, n (%)	206 (56.0)	404 (54.9)
Race, n (%)		
White	324 (88.0)	648 (88.0)
Asian	11 (3.0)	21 (2.9)
Black	24 (6.5)	55 (7.5)
Other	9 (2.4)	12 (1.6)
Coronary artery disease, n (%)*	57 (15.5)	153 (20.8)
Cardiovascular risk factors, n (%)		
Current cigarette use	49 (13.3)	126 (17.1)
Type 2 diabetes mellitus	37 (10.1)	72 (9.8)
Family history of coronary heart disease†	96 (26.1)	201 (27.3)
Metabolic syndrome‡	134 (36.4)	291 (39.5)
Statin use, n (%)		
Nonintensive	123 (33.4)	273 (37.1)
Intensive§	90 (24.5)	205 (27.9)
Lipid parameters at the parent study baseline		
LDL-C by ultracentrifugation, mean (SD), mmol/L	3.7 (1.0)	3.6 (1.0)
LDL-C, calculated, mean (SD), mmol/L	3.7 (1.1)	3.6 (1.0)
Total cholesterol, mean (SD), mmol/L	5.8 (1.2)	5.6 (1.2)
HDL-C, mean (SD), mmol/L	1.4 (0.4)	1.4 (0.4)
Non-HDL-C, mean (SD), mmol/L	4.4 (1.2)	4.3 (1.1)
Total cholesterol/HDL-C ratio, mean (SD)	4.6 (1.7)	4.4 (1.5)
VLDL-C, median (Q1, Q3), mmol/L	0.6 (0.4, 0.8)	0.6 (0.4, 0.8)
ApoB, mean (SD), g/L	1.1 (0.3)	1.1 (0.3)
ApoA1, g/L, mean (SD)	1.5 (0.3)	1.5 (0.3)
ApoB/ApoA1 ratio, mean (SD)	0.8 (0.2)	0.7 (0.2)
Triglycerides, median (Q1, Q3), mmol/L	1.4 (1.0, 1.9)	1.4 (1.1, 1.9)
Lp(a), median (Q1, Q3), nmol/L	36.0 (11.0, 115.0)	40.0 (12.0, 151.0)
Free PCSK9, mean (SD), nmol/L	5.8 (2.1)	6.1 (2.0)

ApoA1 indicates apolipoprotein A1; ApoB, apolipoprotein B; HDL-C, high-density lipoprotein cholesterol; LDL-C, low-density lipoprotein cholesterol; Lp(a): lipoprotein(a); PCSK9, proprotein convertase subtilisin kexin 9 Q1, 25th percentile; Q3, 75th percentile; SD, standard deviation; SOC, standard of care; and VLDL-C, very low-density lipoprotein cholesterol.

*Based on the presence of angina, myocardial infarction, coronary artery bypass graft, or percutaneous coronary intervention.

†Based on presence of coronary heart disease in a first-degree relative male ≤ 55 years of age or female relative ≤ 65 year of age.

‡Defined as having 3 or more of the following factors: elevated waist circumference, triglycerides ≥ 150 mg/dL, low HDL-C (< 40 mg/dL in men and < 50 mg/dL in women), systolic blood pressure ≥ 130 mm Hg or diastolic blood pressure ≥ 85 mm Hg, or hypertension.

§Defined as simvastatin 80 mg/d, atorvastatin ≥ 40 mg/d, rosuvastatin ≥ 20 mg/d, or any statin plus ezetimibe.

evolocumab. Median triglyceride levels fell slightly in the evolocumab+SOC groups over 52 weeks (Figure 3).

Evolocumab+SOC patients reached ultracentrifugation LDL-C levels of < 2.6 mmol/L (100 mg/dL) or < 1.8 mmol/L

(70 mg/dL) more frequently than patients on SOC alone. Among the patients who had at least 1 ultracentrifugation LDL-C post baseline value during OSLER, LDL-C < 2.6 mmol/L (100 mg/dL) was achieved at least at 1 visit by 96.0% of patients treated with evolocumab+SOC but only 32.4% of patients in the SOC group ($P < 0.0001$; Table 2). Among the patients who had ultracentrifugation LDL-C values at all OSLER visits, LDL-C < 2.6 mmol/L (100 mg/dL) was achieved at every visit by 72.1% of patients treated with evolocumab+SOC but only 3.3% of patients in the SOC group ($P < 0.0001$) over 52 weeks. Similarly, LDL-C < 1.8 mmol/L (70 mg/dL) was achieved at least at 1 visit by 82.8% of patients treated with evolocumab+SOC but only 3.6% of patients in the SOC group ($P < 0.0001$). Among the patients who had ultracentrifugation LDL-C values at all OSLER visits, LDL-C < 1.8 mmol/L (70 mg/dL) was achieved at every visit by 37.8% of patients treated with evolocumab+SOC and no patients in the SOC group ($P < 0.0001$).

Achievement of ultracentrifugation LDL-C levels of < 1.3 mmol/L (50 mg/dL) or < 0.65 mmol/L (25 mg/dL) at any OSLER visit occurred in 55.6% and 13.3% of evolocumab+SOC patients, respectively. In contrast, only 2 patients (0.5%) in the SOC group reached LDL-C < 1.3 mmol/L (50 mg/dL), and none achieved LDL-C < 0.65 mmol/L (25 mg/dL). Among the evolocumab+SOC group patients, of those who achieved LDL-C < 1.3 mmol/L (50 mg/dL), 76.0% used statins at baseline, and of those who achieved LDL-C < 0.65 mmol/L (25 mg/dL), 86.7% took statins. Statin use was 51.1% in patients with LDL-C levels ≥ 1.3 mmol/L (50 mg/dL). Among SOC patients, 1 of the 2 patients who reached LDL-C < 1.3 mmol/L (50 mg/dL) and 57.9% of those with LDL-C ≥ 1.3 mmol/L (50 mg/dL) were taking statins at baseline.

Safety and Tolerability

Adverse events occurred in 269 patients (73.1%) in the SOC group and 599 patients (81.4%) in the evolocumab+SOC group (Table 3). The 5 most commonly reported AEs in the 2 groups were nasopharyngitis, upper respiratory tract infections, influenza, arthralgia, and back pain. Investigators considered AEs as possibly related to evolocumab in 5.6% of all AEs. Six patients (1.6%) in the SOC group and 13 patients (1.8%) in the evolocumab+SOC group had alanine aminotransferase or aspartate aminotransferase values > 3 times the upper limit of normal. One patient (0.3%) in the SOC group and 4 patients (0.5%) in the evolocumab+SOC group experienced an elevation in alanine aminotransferase or aspartate aminotransferase > 5 times the upper limit of normal. Serious AEs occurred in 23 SOC patients (6.3%) and 52 patients (7.1%) in the evolocumab+SOC group. No particular serious AEs affected $\geq 2\%$ of patients in either group or was considered by investigators to be possibly related to evolocumab. Twenty-seven patients (3.7%) had AEs that led to the discontinuation of evolocumab, with low frequencies of specific events (Table IV in the online-only Data Supplement). Injection-site reactions were reported in 38 patients (5.2%) in the evolocumab+SOC group and led to discontinuation of evolocumab in only 1 patient. No patient in the SOC group received evolocumab or placebo injections during the study. No neutralizing antibodies to evolocumab were detected in OSLER. Low-titer binding antibodies were detected

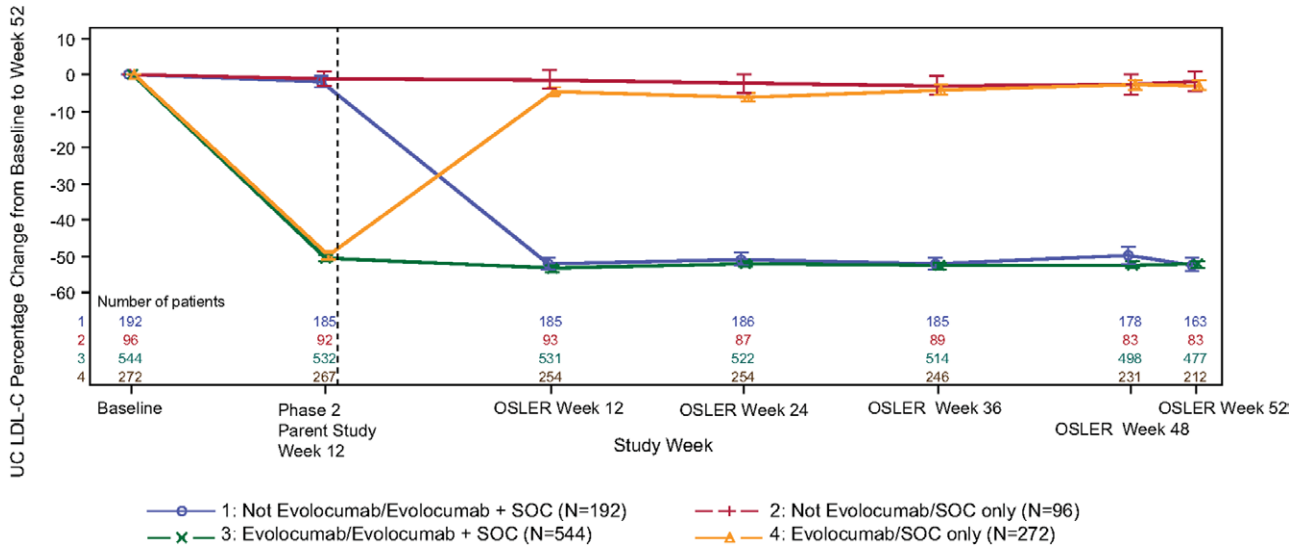


Figure 2. Ultracentrifugation low-density lipoprotein cholesterol (UC LDL-C) percentage change from the phase 2 parent study baseline to week 52. Dashed vertical line indicates time between phase 2 parent and Open-Label Study of Long-term Evaluation Against LDL-C (OSLER) studies. Error bars represent standard error. Plot is based on observed data, and no imputation was used for missing values. SOC indicates standard of care.

at week 4 of OSLER in 2 patients in the SOC group who had received evolocumab in the phase 2 parent study; results at subsequent time points were negative for binding antibodies.

A total of 411 patients (99.5% of whom were receiving evolocumab) achieved LDL-C <1.3 mmol/L (50 mg/dL), and 98 patients (all of whom were receiving evolocumab) achieved

LDL-C <0.65 mmol/L (25 mg/dL), whereas 682 patients (47.4% of whom were receiving evolocumab) had LDL-C levels ≥1.3 mmol/L (50 mg/dL). Overall AEs, serious AEs, elevations in creatine kinase, and elevations in aminotransferases were not appreciably greater in those who achieved low LDL-C (Table 4 and Table V in the online-only Data

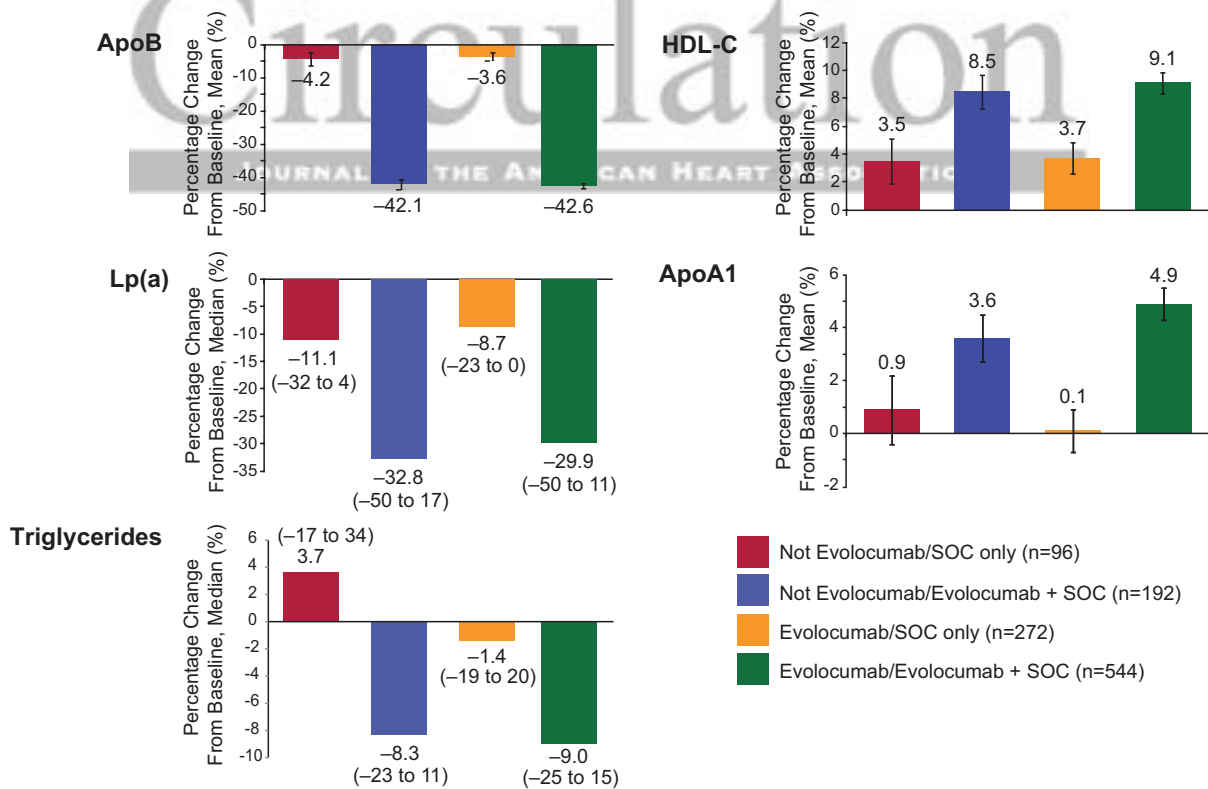


Figure 3. Percentage change from phase 2 parent study baseline at week 52 in apolipoprotein B (ApoB), lipoprotein(a) [Lp(a)], triglycerides, high-density lipoprotein cholesterol (HDL-C), and apolipoprotein A1 (ApoA1). The changes in lipid parameters from baseline in patients receiving evolocumab were all statistically significant ($P < 0.0001$, except for the changes in triglycerides which were $P < 0.05$). The reductions in lipid parameters were greater for patients receiving evolocumab+SOC vs. SOC alone ($P \leq 0.0002$). Error bars represent standard error. SOC indicates standard of care. Data in parentheses represent interquartile ranges.

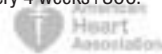
Table 2. Percentage of Patients Who Achieved Ultracentrifugation LDL-C Goals at Follow-Up OSLER Visits

Category (n with evaluable LDL-C measurement in SOC and in evolocumab 420 mg every 4 wk+SOC)	<2.6 mmol/L (100 mg/dL), n (%)		<1.8 mmol/L (70 mg/dL), n (%)	
	SOC	Evolocumab 420 mg Every 4 wk+SOC	SOC	Evolocumab 420 mg Every 4 wk+SOC
At parent EOS (359, 717)	231 (64.4)	491 (68.5)	151 (42.1)	302 (42.1)
At week 12 (347, 716)	60 (17.3)	621 (86.7)	1 (0.3)	443 (61.9)
At week 24 (341, 708)	59 (17.3)	613 (86.6)	3 (0.9)	431 (60.9)
At week 36 (335, 699)	47 (14.0)	598 (85.6)	5 (1.5)	430 (61.5)
At week 48 (314, 676)	43 (16.7)	580 (85.8)	2 (0.6)	415 (61.4)
At week 52 (295, 640)	47 (15.9)	552 (86.3)	3 (1.0)	400 (62.5)
Met target goal at any post baseline visit† (361, 732)	117 (32.4)	703 (96.0)	13 (3.6)	606 (82.8)
Met target goal at all post baseline visits‡ (269, 606)	9 (3.3)	437 (72.1)	0 (0.0)	229 (37.8)
By baseline statin use				
Any statin use				
Met target goal at any post baseline visit† (209, 476)	82 (39.2)	458 (96.2)	6 (2.9)	418 (87.8)
Met target goal at all post baseline visits‡ (163, 399)	8 (4.9)	301 (75.4)	0 (0.0)	179 (44.9)
No statin use				
Met target goal at any post baseline visit† (152, 256)	35 (23.0)	245 (95.7)	7 (4.6)	188 (73.4)
Met target goal at all post baseline visits‡ (106, 207)	1 (0.9)	136 (65.7)	0 (0.0)	50 (24.2)

EOS indicates end of study; LDL-C, low-density lipoprotein cholesterol; OSLER, Open-Label Study of Long-term Evaluation Against LDL-C; and SOC, standard of care. $P < 0.0001$ for all comparisons (except at parent EOS) between SOC and evolocumab 420 mg every 4 weeks+SOC.

†Based on the patients who had at least 1 nonmissing post baseline value.

‡Based on the patients who had nonmissing values at all post baseline visits in OSLER.



Supplement). Headaches, dizziness, insomnia, and back pain tended to occur with greater frequency in those with lower LDL-C. A total of 2.2% of patients in the SOC group and 1.2% patients in the evolocumab+SOC group experienced an adjudicated cardiovascular clinical event (Table 5). Three deaths were reported during the 52-week study. Two patients died in the SOC group: a 53-year-old man who did not receive evolocumab in the phase 2 parent study died of unknown causes at 7.3 months, and a 40-year-old woman who received evolocumab in a parent study died of a pulmonary embolism at 9.8 months. A 45-year-old man in the evolocumab+SOC group who also received evolocumab in the phase 2 parent study and was known to have significant coronary artery disease and a ventricular aneurysm was found to be deceased during month 5 of OSLER.

Discussion

As the first large longer-term evaluation of a PCSK9 inhibitor, findings from the OSLER trial extend the understanding of a novel therapy and provide insight into the efficacy, safety, and tolerability of evolocumab treatment in hypercholesterolemic patients. **Evolocumab reduced LDL-C on average by ≈50% beyond the reduction achieved with optimal SOC in various hypercholesterolemic patient populations.** The reductions in lipid levels achieved after 12 weeks were **stable over the course of the study without evidence of attenuation.** Conversely, discontinuation of evolocumab led to a **fairly rapid return to baseline levels**, although importantly, without a rebound phenomenon.

OSLER enrolled a **heterogeneous group of participants** recruited from phase 2 studies of hypercholesterolemic patients on a statin,⁴ not on a statin,⁵ intolerant to statins,¹⁰

and with heterozygous familial hypercholesterolemia.⁷ This heterogeneity in the population provides a broad view of how a novel therapy may affect a spectrum of patients. For example, we found that 72.1% of evolocumab-treated patients reached LDL-C levels <2.6 mmol/L (100 mg/dL) at all lipid measurements over 52 weeks compared with 3.3% of the SOC group patients, even though SOC patients could have their therapy adjusted after 12 weeks into the study.

As healthcare quality assessments shift toward measured outcomes, the predictability of achieving lipid treatment targets as demonstrated in OSLER will likely take on additional importance. Anti-PCSK9 antibodies, if deployed strategically, may lead to greater numbers within a treated population reaching and maintaining stable goals for LDL-C and other lipoproteins. Challenging patients such as those who fail to reach current lipid goals despite maximum doses of highly effective statin agents or those with well-documented statin intolerance are thus logical populations for treatment with PCSK9 inhibitors.

More broadly, the emergence of anti-PCSK9 therapies may provide a means to help answer the long-debated clinical question of **how low to reduce LDL-C in patients at risk.** Several lines of evidence suggest that further clinical benefits could accrue from lowering LDL-C to levels below those currently advocated. This evidence includes **Mendelian randomization analyses showing that genetic variations that produce very low levels of LDL-C confer high levels of protection against atherosclerotic complications without known offsetting morbidity or mortality.**^{16,17} Observations from statin clinical trials provide another compelling argument for aggressive treatment. In these trials, cohorts with the lowest LDL-C levels consistently experienced the fewest

Table 3. Adverse Events and Laboratory Results

Adverse Events	SOC (n=368), n (%)	Evolocumab 420 mg Every 4 wk+SOC (n=736), n (%)
Any	269 (73.1)	599 (81.4)
Serious	23 (6.3)	52 (7.1)
Leading to discontinuation of investigational product (evolocumab)	NA	27 (3.7)
Deaths	2 (0.5)	1 (0.1)
Most common adverse events		
Nasopharyngitis	36 (9.8)	90 (12.2)
Upper respiratory tract infection	28 (7.6)	57 (7.7)
Influenza	19 (5.2)	52 (7.1)
Arthralgia	16 (4.3)	51 (6.9)
Back pain	20 (5.4)	48 (6.5)
Muscle related	36 (9.8)	68 (9.2)
Injection-site reactions	NA*	38 (5.2)
Laboratory results		
ALT or AST >3×ULN at any post baseline visit	6 (1.6)	13 (1.8)
ALT or AST >5×ULN at any post baseline visit	1 (0.3)	4 (0.5)
Creatine kinase >5×ULN at any post baseline visit	7 (1.9)	7 (1.0)
Creatine kinase >10×ULN at any post baseline visit	2 (0.5)	2 (0.3)

ALT indicates alanine aminotransferase; AST, aspartate aminotransferase; NA, not applicable; SOC, standard of care; and ULN, upper limit of normal.

*Patients in the SOC group did not receive injections.

adverse clinical outcomes, and patients with LDL-C levels <1.3 mmol/L (50 mg/dL) seemed to fare best.^{18,19}

OSLER demonstrated that the vast majority of patients treated with evolocumab can achieve LDL-C levels significantly below current guidelines. The high percentage of OSLER patients with LDL-C <1.3 mmol/L (50 mg/dL), especially those with coadministered statin therapy, suggests that future cardiovascular outcomes trials with evolocumab may be useful to explore the benefit of LDL-C reductions beyond current targets. These studies may also help to define whether clinical gains accrue from the further therapeutic upregulation of LDL receptors, a mechanism of action that PCSK9 inhibition shares with statin therapy.

In terms of tolerability, the high participation rate (81%) from the phase 2 parent evolocumab studies reflects good tolerance of the parenteral therapy, as reported in the short-term studies.^{4,5,7,10} Moreover, the low rate of patients who discontinued evolocumab due to AEs (3.7%) also indicates excellent ongoing acceptance of the therapy. Overall, AEs were approximately balanced between the evolocumab+SOC and SOC groups over a year of treatment despite more frequent on-site contact in the evolocumab+SOC group. Injection-site reactions occurred in 5.2% of patients in the evolocumab+SOC group. Side effects of particular concern such as liver function test abnormalities, muscle symptoms, or laboratory abnormalities occurred no more frequently in evolocumab-treated patients than in those treated with SOC.

In addition, the absence of neutralizing antibodies and the rarity of binding antibodies in OSLER provide reassurance about the long-term immunogenicity of evolocumab and are consistent with observations in the short-term evolocumab studies. These findings are important because even small untoward off-target effects of LDL-C-lowering therapy may mask or outweigh the antiatherosclerotic benefits of a lipid-lowering treatment. This phenomenon may have affected outcomes in trials of previously studied agents that have positively affected lipid profiles but have led to negative or neutral clinical results.^{20–23}

OSLER also provides information about the safety of treating patients to low and very low levels of LDL-C over 1 year. Overall AE rates, serious AE rates, and elevations in creatine kinase and aminotransferases were not appreciably greater in those who achieved low LDL-C. These data suggest that evolocumab may offer significant gains in additional LDL-C lowering without incurring the increased likelihood of untoward laboratory effects, as seen during dose escalation of statins.^{24–26} OSLER patients who reached low and very low LDL-C levels reported slightly higher rates of headache, dizziness, insomnia, and back pain. This slightly higher reported rate of minor, subjective symptoms requires cautious interpretation because it may have resulted from an asymmetry in the protocol design, which required a greater number of face-to-face interactions with site personnel for patients treated with injection therapy. Hemorrhagic stroke, a reported cause of concern related to low levels of LDL-C, was not observed during OSLER, and other forms of neurological dysfunction such as amnesia and memory/mental impairment were reported uncommonly (in ≤1% of patients in any group). Safety observations related to the achievement of low LDL-C levels warrant continued investigation, particularly in studies in which lipid results are blinded.

Several potential limitations of this study should be considered. OSLER included a heterogeneous population who completed phase 2 studies. Although this diversity might be viewed as a strength in terms of the generalizability of the findings, some of the included patients such as the low-risk patients from MENDEL who did not receive statin therapy at baseline may not represent a population that will ultimately receive anti-PCSK9 therapy. Furthermore, it should be noted that 6 dosing regimens of evolocumab were used in the phase 2 parent trials, whereas only the top every-4-weeks dose was used in OSLER. LDL-C measurements were available in 85% of patients at week 52 and imputation was not performed for missing data. However, we do not anticipate that missing data, if observed, would appreciably affect the results or conclusions. OSLER was not designed to rigorously address either the likelihood of LDL-C goal attainment for patients who previously failed to reach lipid goals or to attempt to treat populations to specific targeted levels of LDL-C. Therefore observations made related to these issues should be regarded as exploratory. Finally, the open-label design and more frequent visits for patients allocated to evolocumab limit the interpretation of the relative rates of AEs between the 2 arms.

OSLER was not powered or designed as an outcomes study; rather, the ongoing Further Cardiovascular Outcomes

Table 4. Adverse Events by Patient's Lowest Post baseline Ultracentrifugation LDL-C Value

Adverse Events	LDL-C <0.65 mmol/L (<25 mg/dL), n (%)		LDL-C <1.3 mmol/L (<50 mg/dL), n (%)		LDL-C ≥1.3 mmol/L (≥50 mg/dL), n (%)	
	SOC (n=0)	Evolocumab 420 mg Every 4 wk+SOC (n=98)	SOC (n=2)	Evolocumab 420 mg Every 4 wk+SOC (n=409)	SOC (n=359)	Evolocumab 420 mg Every 4 wk+SOC (n=323)
Any	NA	80 (81.6)	0 (0.0)	336 (82.2)	268 (74.7)	262 (81.1)
Serious adverse events	NA	5 (5.1)	0 (0.0)	27 (6.6)	22 (6.1)	25 (7.7)
CK >5×ULN	NA	2 (2.0)	0 (0.0)	2 (0.5)	7 (1.9)	5 (1.5)
CK >10×ULN	NA	0 (0.0)	0 (0.0)	0 (0.0)	2 (0.6)	2 (0.6)
ALT or AST >3×ULN	NA	1 (1.0)	0 (0.0)	3 (0.7)	6 (1.7)	10 (3.1)
Total bilirubin >2×ULN	NA	2 (2.0)	0 (0.0)	4 (1.0)	1 (0.3)	0 (0.0)
Nervous system disorders	NA	19 (19.4)	0 (0.0)	64 (15.6)	37 (10.3)	44 (13.6)
Headache	NA	9 (9.2)	0 (0.0)	25 (6.1)	10 (2.8)	21 (6.5)
Dizziness	NA	4 (4.1)	0 (0.0)	11 (2.7)	11 (3.1)	5 (1.5)
Migraine	NA	1 (1.0)	0 (0.0)	4 (1.0)	1 (0.3)	7 (2.2)
Amnesia	NA	1 (1.0)	0 (0.0)	1 (0.2)	0 (0.0)	1 (0.3)
Memory impairment*	NA	0 (0.0)	0 (0.0)	4 (1.0)	0 (0.0)	1 (0.3)
Hepatobiliary disorders	NA	1 (1.0)	0 (0.0)	3 (0.7)	3 (0.8)	1 (0.3)
Psychiatric disorders	NA	5 (5.1)	0 (0.0)	20 (4.9)	12 (3.3)	15 (4.6)
Insomnia	NA	4 (4.1)	0 (0.0)	9 (2.2)	4 (1.1)	4 (1.2)
Depression	NA	1 (1.0)	0 (0.0)	6 (1.5)	5 (1.4)	5 (1.5)
Anxiety	NA	0 (0.0)	0 (0.0)	4 (1.0)	2 (0.6)	5 (1.5)
Renal and urinary disorders	NA	1 (1.0)	0 (0.0)	9 (2.2)	11 (3.1)	8 (2.5)
Musculoskeletal and connective tissue disorders	NA	34 (34.7)	0 (0.0)	135 (33.0)	89 (24.8)	84 (26.0)
Back pain	NA	12 (12.2)	0 (0.0)	31 (7.6)	20 (5.6)	17 (5.3)
Arthralgia	NA	7 (7.1)	0 (0.0)	34 (8.3)	16 (4.5)	17 (5.3)
Pain in extremity	NA	7 (7.1)	0 (0.0)	21 (5.1)	10 (2.8)	15 (4.6)

ALT indicates alanine aminotransferase; AST, aspartate aminotransferase; CK, creatine kinase; NA, not applicable; SOC, standard of care; and ULN, upper limit of normal.

*Includes memory impairment and mental impairment terms.

Research With PCSK9 Inhibition in Subjects With Elevated Risk (FOURIER; NCT01764633) trial will address this important issue. Nonetheless, it is reassuring that

Table 5. Patient Incidence of Adjudicated Cardiovascular Clinical Events

	SOC (n=368), n (%)	Evolocumab 420 mg Every 4 wk+SOC (n=736), n (%)
Patients with any positively adjudicated cardiovascular clinical event	8 (2.2)	9 (1.2)
Death	2 (0.5)	1 (0.1)
Myocardial infarction (fatal and nonfatal)	3 (0.8)	0 (0.0)
Hospitalization for unstable angina	2 (0.5)	2 (0.3)
Revascularization	4 (1.1)	6 (0.8)
Cerebrovascular event	1 (0.3)	3 (0.4)
Transient ischemic attack	1 (0.3)	2 (0.3)
Ischemic stroke	0 (0.0)	1 (0.1)
Hemorrhagic stroke	0 (0.0)	0 (0.0)
Hospitalization for heart failure	1 (0.3)	0 (0.0)

SOC indicates standard of care.

adjudicated cardiovascular clinical events occurred no more frequently in evolocumab-treated patients or in patients who reached low LDL-C levels than in SOC patients treated less aggressively. Although the absence of a safety signal provides support for further development of evolocumab, ongoing trials will ultimately determine the benefits, or lack thereof, derived from treatment to reduce LDL-C levels with PCSK9 inhibitors.

Conclusions

The OSLER trial is the largest and longest efficacy and safety evaluation of an anti-PCSK9 antibody to date. Findings in a diverse patient population during >1000 patient-years of observation suggest a highly effective, consistent, and well-tolerated therapy. Ongoing outcomes trials will further define the clinical utility of evolocumab and other agents in its class as an emerging approach to the treatment of hypercholesterolemia.

Acknowledgments

We acknowledge clinical research support from Andrew Lowy, MD; statistical support from Wendy Ma, MS; and editorial support from Karen Driver, MS, and Meera Kodukulla, PhD, all from Amgen.

Source of Funding

This trial was funded by Amgen Inc. The Jacksonville Center for Clinical Research also received research grants for studying anti-PCSK9 therapy from Pfizer, Regeneron, Roche, and Sanofi.

Disclosures

Dr Koren is an employee of Jacksonville Center for Clinical Research, which has received research grants from Amgen Inc. Dr Giugliano has received honoraria for lectures and consultation from Amgen, Merck, Regeneron, and Sanofi-Aventis and participates in a clinical trial supported by a research grant from Merck to the TIMI Study Group for work related to lipid-lowering therapies. Dr Raal has received consulting fees from Amgen and Sanofi related to PCSK9 inhibitors, and his institution has received research funding related to PCSK9 inhibitor clinical trials from Amgen and Sanofi. Dr Sullivan has received research funding from Amgen, Abbott Products, AstraZeneca, Merck Sharp & Dohme, and Sanofi Aventis; he has also received funding for educational programs from Abbott Products, AstraZeneca, Merck Sharp & Dohme, Pfizer Australia, and Roche, as well as travel support from Merck Sharp & Dohme. He served on advisory boards for Abbott Products, Merck Sharp & Dohme, and Pfizer Australia. Dr Bolognese has received research grants from Amgen, Unigene Laboratories Inc, Eli Lilly and Co, and Radius Health, Inc. He has served on speakers' bureaus for Amgen, Eli Lilly and Co, and Genentech. Dr Langslet has served on a consultant/advisory board for Janssen Pharmaceuticals and Sanofi. Dr Civeira has received consulting fees from Amgen and Sanofi related to PCSK9 inhibitors, and his institution has received research funding related to PCSK9 inhibitor clinical trials from Amgen and Sanofi. Drs Somaratne, Nelson, Liu, Scott, and Wasserman are employees of Amgen and have received Amgen stock/stock options. Dr Sabatine is a member of the TIMI Study Group, which received research grant support from Amgen for the conduct of the LAPLACE-TIMI 57 trial. Dr Sabatine has received research-grant support through Brigham and Women's Hospital from AstraZeneca/Bristol-Myers Squibb Alliance, Bristol-Myers Squibb/Sanofi-aventis Joint Venture, Daiichi-Sanyo, Eisai, Genzyme, GlaxoSmithKline, Merck, Sanofi-aventis, Takeda, Abbott Laboratories, Accumetrics, Critical Diagnostics, Nanosphere, and Roche Diagnostics; Dr Sabatine has consulted for Aegerion, Amgen, Bristol-Myers Squibb, GlaxoSmithKline, Intarcia, Merck, Pfizer, Sanofi-aventis, AstraZeneca, and Vertex.

References

- Baigent C, Blackwell L, Emberson J, Holland LE, Reith C, Bhalra N, Peto R, Barnes EH, Keech A, Simes J, Collins R. Efficacy and safety of more intensive lowering of LDL cholesterol: a meta-analysis of data from 170,000 participants in 26 randomised trials. *Lancet*. 2010;376:1670–1681.
- Stein EA, Swergold GD. Potential of proprotein convertase subtilisin/kexin type 9 based therapeutics. *Curr Atheroscler Rep*. 2013;15:310.
- Dias CS, Shaywitz AJ, Wasserman SM, Smith BP, Gao B, Stolman DS, Crispino CP, Smirnakis KV, Emery MG, Colbert A, Gibbs JP, Retter MW, Cooke BP, Uy ST, Matson M, Stein EA. Effects of AMG 145 on low-density lipoprotein cholesterol levels: results from 2 randomized, double-blind, placebo-controlled, ascending-dose phase 1 studies in healthy volunteers and hypercholesterolemic subjects on statins. *J Am Coll Cardiol*. 2012;60:1888–1898.
- Giugliano RP, Desai NR, Kohli P, Rogers WJ, Somaratne R, Huang F, Liu T, Mohanavelu S, Hoffman EB, McDonald ST, Abrahamson TE, Wasserman SM, Scott R, Sabatine MS. Efficacy, safety, and tolerability of a monoclonal antibody to proprotein convertase subtilisin/kexin type 9 in combination with a statin in patients with hypercholesterolaemia (LAPLACE-TIMI 57): a randomised, placebo-controlled, dose-ranging, phase 2 study. *Lancet*. 2012;380:2007–2017.
- Koren MJ, Scott R, Kim JB, Knusel B, Liu T, Lei L, Bolognese M, Wasserman SM. Efficacy, safety, and tolerability of a monoclonal antibody to proprotein convertase subtilisin/kexin type 9 as monotherapy in

patients with hypercholesterolaemia (MENDEL): a randomised, double-blind, placebo-controlled, phase 2 study. *Lancet*. 2012;380:1995–2006.

- McKenney JM, Koren MJ, Kereiakes DJ, Hanotin C, Ferrand AC, Stein EA. Safety and efficacy of a monoclonal antibody to proprotein convertase subtilisin/kexin type 9 serine protease, SAR236553/REGN727, in patients with primary hypercholesterolemia receiving ongoing stable atorvastatin therapy. *J Am Coll Cardiol*. 2012;59:2344–2353.
- Raal F, Scott R, Somaratne R, Bridges I, Li G, Wasserman SM, Stein EA. Low-density lipoprotein cholesterol-lowering effects of AMG 145, a monoclonal antibody to proprotein convertase subtilisin/kexin type 9 serine protease in patients with heterozygous familial hypercholesterolemia: the Reduction of LDL-C With PCSK9 Inhibition in Heterozygous Familial Hypercholesterolemia Disorder (RUTHERFORD) randomized trial. *Circulation*. 2012;126:2408–2417.
- Roth EM, McKenney JM, Hanotin C, Asset G, Stein EA. Atorvastatin with or without an antibody to PCSK9 in primary hypercholesterolemia. *N Engl J Med*. 2012;367:1891–1900.
- Stein EA, Mellis S, Yancopoulos GD, Stahl N, Logan D, Smith WB, Lisbon E, Gutierrez M, Webb C, Wu R, Du Y, Kranz T, Gasparino E, Swergold GD. Effect of a monoclonal antibody to PCSK9 on LDL cholesterol. *N Engl J Med*. 2012;366:1108–1118.
- Sullivan D, Olsson AG, Scott R, Kim JB, Xue A, GebSKI V, Wasserman SM, Stein EA. Effect of a monoclonal antibody to PCSK9 on low-density lipoprotein cholesterol levels in statin-intolerant patients: the GAUSS randomized trial. *JAMA*. 2012;308:2497–2506.
- Stein EA, Honarpour N, Wasserman SM, Xu F, Scott R, Raal FJ. Effect of the PCSK9 monoclonal antibody, AMG 145, in homozygous familial hypercholesterolemia. *Circulation*. 2013;128:2113–2120.
- Kohli P, Desai NR, Giugliano RP, Kim JB, Somaratne R, Huang F, Knusel B, McDonald S, Abrahamson T, Wasserman SM, Scott R, Sabatine MS. Design and rationale of the LAPLACE-TIMI 57 trial: a phase II, double-blind, placebo-controlled study of the efficacy and tolerability of a monoclonal antibody inhibitor of PCSK9 in subjects with hypercholesterolemia on background statin therapy. *Clin Cardiol*. 2012;35:385–391.
- Martin SS, Blaha MJ, Elshazly MB, Brinton EA, Toth PP, McEvoy JW, Joshi PH, Kulkarni KR, Mize PD, Kwitrovich PO, Defilippis AP, Blumenthal RS, Jones SR. Friedewald-estimated versus directly measured low-density lipoprotein cholesterol and treatment implications. *J Am Coll Cardiol*. 2013;62:732–739.
- Lipid Research Clinics. *Manual of Laboratory Operations: Lipid and Lipoprotein Analysis (Revised)*. Washington, DC: Department of Health and Human Services; 1982. Publication No. NIH 75-67815.
- Friedewald WT, Levy RI, Fredrickson DS. Estimation of the concentration of low-density lipoprotein cholesterol in plasma, without use of the preparative ultracentrifuge. *Clin Chem*. 1972;18:499–502.
- Clarke R, Peden JF, Hopewell JC, Kyriakou T, Goel A, Heath SC, Parish S, Barlera S, Franzosi MG, Rust S, Bennett D, Silveira A, Malarstig A, Green FR, Lathrop M, Gigante B, Leander K, de Faire U, Seedorf U, Hamsten A, Collins R, Watkins H, Farrall M; PROCARDIS Consortium. Genetic variants associated with Lp(a) lipoprotein level and coronary disease. *N Engl J Med*. 2009;361:2518–2528.
- Ference BA, Yoo W, Alesh I, Mahajan N, Mirowska KK, Mewada A, Kahn J, Afonso L, Williams KA Sr, Flack JM. Effect of long-term exposure to lower low-density lipoprotein cholesterol beginning early in life on the risk of coronary heart disease: a mendelian randomization analysis. *J Am Coll Cardiol*. 2012;60:2631–2639.
- Hsia J, MacFadyen JG, Monyak J, Ridker PM. Cardiovascular event reduction and adverse events among subjects attaining low-density lipoprotein cholesterol <50 mg/dl with rosuvastatin: the JUPITER trial (Justification for the Use of Statins in Prevention: An Intervention Trial Evaluating Rosuvastatin). *J Am Coll Cardiol*. 2011;57:1666–1675.
- Wiviott SD, Cannon CP, Morrow DA, Ray KK, Pfeffer MA, Braunwald E; PROVE IT-TIMI 22 Investigators. Can low-density lipoprotein be too low? The safety and efficacy of achieving very low low-density lipoprotein with intensive statin therapy: a PROVE IT-TIMI 22 substudy. *J Am Coll Cardiol*. 2005;46:1411–1416.
- Barter PJ, Caulfield M, Eriksson M, Grundy SM, Kastelein JJ, Komajda M, Lopez-Sendon J, Mosca L, Tardif JC, Waters DD, Shear CL, Revkin JH, Buhr KA, Fisher MR, Tall AR, Brewer B; ILLUMINATE Investigators. Effects of torcetrapib in patients at high risk for coronary events. *N Engl J Med*. 2007;357:2109–2122.
- AIM-HIGH Investigators, Boden WE, Probstfield JL, Anderson T, Chaitman BR, Desvignes-Nickens P, Koprowicz K, McBride R, Teo K,

- Weintraub W. Niacin in patients with low HDL cholesterol levels receiving intensive statin therapy. *N Engl J Med*. 2011;365:2255–2267.
22. Goldman S, McCarren M, Morkin E, Ladenson PW, Edson R, Warren S, Ohm J, Thai H, Churby L, Barnhill J, O'Brien T, Anand I, Warner A, Hattler B, Dunlap M, Erikson J, Shih MC, Lavori P. DITPA (3,5-diiodothyropropionic acid), a thyroid hormone analog to treat heart failure: phase II trial Veterans Affairs Cooperative Study. *Circulation*. 2009;119:3093–3100.
 23. Wright RS. Recent clinical trials evaluating benefit of drug therapy for modification of HDL cholesterol. *Curr Opin Cardiol*. 2013;28:389–398.
 24. Davidson MH, Stein EA, Dujovne CA, Hunninghake DB, Weiss SR, Knopp RH, Illingworth DR, Mitchel YB, Melino MR, Zupkis RV, Dobrinska MR, Amin RD, Tobert JA. The efficacy and six-week tolerability of simvastatin 80 and 160 mg/day. *Am J Cardiol*. 1997;79:38–42.
 25. Nissen SE. High-dose statins in acute coronary syndromes: not just lipid levels. *JAMA*. 2004;292:1365–1367.
 26. Olsson AG, Pears J, McKellar J, Mizan J, Raza A. Effect of rosuvastatin on low-density lipoprotein cholesterol in patients with hypercholesterolemia. *Am J Cardiol*. 2001;88:504–508.

CLINICAL PERSPECTIVE

Proprotein convertase subtilisin/kexin type 9 (PCSK9), a serine protease, impairs low-density lipoprotein cholesterol (LDL-C) clearance from plasma through its pivotal role of signaling the degradation of LDL-C receptors. Evolocumab is a fully human monoclonal antibody targeted against PCSK9. In 4 separate phase 2 dose ranging studies of 12 weeks' duration in patients on statins, with familial hypercholesterolemia, with low risk hypercholesterolemia not on statins, and with statin intolerance, evolocumab reduced LDL-C by up to 65%. The Open-Label Study of Long-term Evaluation Against LDL-C (OSLER), a global clinical trial, included 1104 patients who completed the 4 phase 2 studies and were randomized 2:1, regardless of their phase 2 study assignment, to either open-label subcutaneous evolocumab 420 mg every 4 weeks plus standard of care or standard of care alone. Patients who first received evolocumab in OSLER experienced a 52.3% LDL-C reduction after week 52 ($P < 0.0001$) compared with the phase 2 parent study pretreatment baseline. Patients randomized to continue evolocumab after completing phase 2 studies experienced persistent stable reductions in LDL-C. Patients who discontinued evolocumab on entry into OSLER had their LDL-C levels return to near baseline without a rebound effect. Adverse events were largely balanced between groups except for minor injection-site reactions. No neutralizing antidrug antibodies were detected during 52 weeks of follow-up. OSLER, the first large, longer-term evaluation of anti-PCSK9 therapy, shows that evolocumab is well tolerated and demonstrates continued efficacy over 1 year of treatment in a diverse group of patients with hypercholesterolemia.





 JOURNAL OF THE AMERICAN HEART ASSOCIATION

SUPPLEMENTAL MATERIAL

Efficacy and Safety of Longer-term Administration of Evolocumab (AMG 145) in Patients with Hypercholesterolemia: 52-Week Results from the Open-label Study of Long-term Evaluation Against LDL-C (OSLER) Randomized Trial

Longer-term effects of PCSK9 inhibition

Michael J Koren, MD¹; Robert P Giugliano, MD²; Frederick J Raal, MB, Bch, Mmed, PhD³;
David Sullivan, MD⁴; Michael Bolognese, MD⁵; Gisle Langslet, MD⁶; Fernando Civeira, MD⁷;
Ransi Somaratne, MD⁸; Patric Nelson, MPH, MBA⁸; Thomas Liu, PhD⁸; Rob Scott, MD⁸; Scott M
Wasserman, MD⁸; Marc S Sabatine, MD, MPH² for the OSLER Investigators

CONTENTS

Supplemental Methods

List of Adjudicated Clinical Events.....	Page 2
Additional Laboratory Methods.....	Page 3

Supplemental Tables

Supplemental Table S1. Baseline Patient Characteristics by Phase 2 Parent Study and Extension Study Treatment Assignment.....	Page 4
Supplemental Table S2. Lipid Parameters at Phase 2 Parent Study Week 12	Page 6
Supplemental Table S3. Percentage Change from Baseline of Phase 2 Parent Study to Week 52 for Lipid Values	Page 7
Supplemental Table S4. Adverse Events Leading to Discontinuation of Investigational Product.....	Page 8
Supplemental Table S5. OSLER Patients with CK Elevations > 10xULN.....	Page 9

Supplemental Methods

List of Adjudicated Clinical Events

Deaths

- Cardiovascular
- Non-cardiovascular

Myocardial infarction

- Fatal
- Non-fatal

Hospitalization for unstable angina

Revascularization

- PCI
- CABG
- Non-coronary

Cerebrovascular event

- Transient ischemic attack
- Stroke
 - Fatal
 - Ischemic
 - Ischemic with hemorrhagic conversion
 - Hemorrhagic stroke
 - Subarachnoid hemorrhage
 - Type undetermined
 - Non-fatal
 - Ischemic
 - Ischemic with hemorrhagic conversion
 - Hemorrhagic stroke
 - Subarachnoid hemorrhage
 - Type undetermined

Hospitalization for heart failure

Muscle event

- Rhabdomyolysis with renal dysfunction
- Rhabdomyolysis without renal dysfunction
- Myopathy
- Myalgia with CK elevation
- Myalgia without CK elevation

Additional Laboratory Methods

Triglycerides and cholesterol were measured with enzymatic colorimetric tests (Olympus AU2700 or AU5400 Analyzer, Olympus, Center Valley, Pennsylvania, USA). ApoB-containing lipoproteins were precipitated with dextran sulfate, and HDL-C was measured in the supernatant. ApoA1 and ApoB were measured with rate immunonephelometry (Dade Behring BNII nephelometer, Siemens Healthcare Diagnostics, Deerfield, Illinois, USA), and Lp(a) was measured by immunoturbidimetry (Denka Seiken Co. Ltd. Lp(a) assay from Polymedco, Cortlandt Manor, NY on the Olympus Analyzer).

Table S1. Baseline Patient Characteristics by Phase 2 Parent Study and Extension Study Treatment Assignment

Characteristic	Not Evolocumab in Phase 2		Evolocumab in Phase 2		All	
	Parent Study		Parent Study		All	
	SOC (N=96)	Evolocumab 420 mg Q4W + SOC (N=192)	SOC (N=272)	Evolocumab 420 mg Q4W + SOC (N=544)	SOC (N=368)	Evolocumab 420 mg Q4W + SOC (N=736)
Age, y, mean (SD)	55.8 (11.8)	55.1 (11.4)	57.0 (11.7)	56.4 (12.0)	56.7 (11.7)	56.1 (11.9)
Sex, female, n (%)	58 (60.4)	108 (56.3)	148 (54.4)	296 (54.4)	206 (56.0)	404 (54.9)
Race, n (%)						
White	88 (91.7)	172 (89.6)	236 (86.8)	476 (87.5)	324 (88.0)	648 (88.0)
Asian	3 (3.1)	2 (1.0)	8 (2.9)	19 (3.5)	11 (3.0)	21 (2.9)
Black	5 (5.2)	12 (6.3)	19 (7.0)	43 (7.9)	24 (6.5)	55 (7.5)
Other	0 (0.0)	6 (3.1)	9 (3.3)	6 (1.1)	9 (2.4)	12 (1.6)
Coronary artery disease [†]	12 (12.5)	38 (19.8)	45 (16.5)	115 (21.1)	57 (15.5)	153 (20.8)
Cardiovascular risk factors, n (%)						
Current cigarette use	12 (12.5)	32 (16.7)	37 (13.6)	94 (17.3)	49 (13.3)	126 (17.1)
Type 2 diabetes mellitus	6 (6.3)	12 (6.3)	31 (11.4)	60 (11.0)	37 (10.1)	72 (9.8)
Family history of coronary heart disease [†]	27 (28.1)	50 (26.0)	69 (25.4)	151 (27.8)	96 (26.1)	201 (27.3)
Metabolic syndrome [†]	36 (37.5)	82 (42.7)	98 (36.0)	209 (38.4)	134 (36.4)	291 (39.5)
Statin use, n (%)						
Non-intensive	28 (29.2)	76 (39.6)	95 (34.9)	197 (36.2)	123 (33.4)	273 (37.1)
Intensive [§]	25 (26.0)	50 (26.0)	65 (23.9)	155 (28.5)	90 (24.5)	205 (27.9)

Lipid parameters

LDL-C, mmol/L, mean (SD), by ultracentrifugation	3.8 (1.0)	3.6 (0.9)	3.7 (1.0)	3.6 (1.0)	3.7 (1.0)	3.6 (1.0)
LDL-C, mmol/L, mean (SD), calculated	3.8 (1.0)	3.6 (1.0)	3.6 (1.1)	3.6 (1.0)	3.7 (1.1)	3.6 (1.0)
Total cholesterol, mmol/L, mean (SD)	5.9 (1.1)	5.6 (1.1)	5.7 (1.2)	5.6 (1.2)	5.8 (1.2)	5.6 (1.2)
HDL-C, mmol/L, mean (SD)	1.4 (0.4)	1.4 (0.4)	1.4 (0.4)	1.4 (0.4)	1.4 (0.4)	1.4 (0.4)
Non-HDL-C, mmol/L, mean (SD)	4.5 (1.1)	4.3 (1.1)	4.4 (1.2)	4.3 (1.1)	4.4 (1.2)	4.3 (1.1)
Total cholesterol/HDL-C ratio, mean (SD)	4.5 (1.4)	4.4 (1.4)	4.6 (1.8)	4.4 (1.5)	4.6 (1.7)	4.4 (1.5)
VLDL-C, mmol/L, median (Q1, Q3)	0.5 (0.4, 0.8)	0.6 (0.4, 0.8)	0.6 (0.4, 0.8)	0.6 (0.4, 0.8)	0.6 (0.4, 0.8)	0.6 (0.4, 0.8)
ApoB, g/L, mean (SD)	1.2 (0.3)	1.1 (0.2)	1.1 (0.3)	1.1 (0.3)	1.1 (0.3)	1.1 (0.3)
ApoA1, g/L, mean (SD)	1.6 (0.3)	1.5 (0.3)	1.5 (0.3)	1.5 (0.3)	1.5 (0.3)	1.5 (0.3)
ApoB/ApoA1 ratio, mean (SD)	0.8 (0.2)	0.7 (0.2)	0.8 (0.3)	0.7 (0.2)	0.8 (0.2)	0.7 (0.2)
Triglycerides, mmol/L, median (Q1, Q3)	1.3 (0.9, 1.8)	1.4 (1.0, 1.9)	1.4 (1.0, 2.0)	1.4 (1.1, 1.9)	1.4 (1.0, 1.9)	1.4 (1.1, 1.9)
Lp(a), nmol/L, median (Q1, Q3)	40.5 (15.3, 116.0)	38.0 (11.0, 159.0)	34.0 (10.0, 112.0)	40.0 (12.0, 147.5)	36.0 (11.0, 15.0)	40.0 (12.0, 151.0)
Free PCSK9, nmol/L, mean (SD)	6.2 (2.2)	6.0 (1.9)	5.7 (2.0)	6.1 (2.0)	5.8 (2.1)	6.1 (2.0)

ApoA1, apolipoprotein A1; ApoB, apolipoprotein B; HDL-C, high-density lipoprotein cholesterol; LDL-C, low-density lipoprotein cholesterol; Lp(a), lipoprotein (a); PCSK9, proprotein convertase subtilisin/kexin type 9; Q1, 25th percentile; Q3, 75th percentile; Q4W, every 4 weeks; QD, every day; SD, standard deviation; SOC, standard of care; VLDL-C, very low-density lipoprotein cholesterol.

*Based on presence of angina, myocardial infarction, coronary artery bypass graft, or percutaneous coronary intervention

†Based on presence of coronary heart disease in a first-degree relative male ≤ 55 years or female ≤ 65 years of age

‡Defined as having 3 or more of the following factors: elevated waist circumference, triglycerides ≥ 150 mg/dL, low HDL-C (< 40 mg/dL in men and < 50 mg/dL in women), systolic blood pressure ≥ 130 mmHg or diastolic blood pressure ≥ 85 mmHg or hypertension

§Defined as simvastatin 80 mg QD, atorvastatin ≥ 40 mg QD, rosuvastatin ≥ 20 mg QD, or any statin plus ezetimibe

Supplemental Table S2. Lipid Parameters at Phase 2 Parent Study Week 12

Lipid Parameter	SOC (N=368)	Evolocumab 420 mg Q4W + SOC (N=736)
LDL-C, mmol/L, mean (SD), by ultra-centrifugation	2.4 (1.3)	2.2 (1.1)
LDL-C, mmol/L, mean (SD), calculated	2.2 (1.3)	2.1 (1.2)
Total cholesterol, mmol/L, mean (SD)	4.3 (1.4)	4.2 (1.3)
HDL-C, mmol/L, mean (SD)	1.5 (0.4)	1.5 (0.5)
Non-HDL-C, mmol/L, mean (SD)	2.9 (1.4)	2.7 (1.3)
Total cholesterol/HDL-C ratio, mean (SD)	3.2 (1.4)	3.1 (1.3)
VLDL-C, mmol/L, median (Q1, Q3)	0.5 (0.3, 0.6)	0.4 (0.3, 0.6)
ApoB, g/L, mean (SD)	0.8 (0.3)	0.8 (0.3)
ApoA1, g/L, mean (SD)	1.6 (0.3)	1.6 (0.3)
ApoB/ApoA1 ratio, mean (SD)	0.5 (0.2)	0.5 (0.2)
Triglycerides, mmol/L, median (Q1, Q3)	1.2 (0.9, 1.6)	1.3 (0.9, 1.8)
Lp(a), nmol/L, median (Q1, Q3)	28.0 (8.0, 87.0)	30.0 (8.0, 125.0)
Free PCSK9, nmol/L, mean (SD)	3.8 (2.3)	3.9 (2.3)

ApoA1, Apolipoprotein A1; ApoB, apolipoprotein B; HDL-C, high-density lipoprotein cholesterol; LDL-C, low-density lipoprotein cholesterol; Lp(a), lipoprotein (a); PCSK9, proprotein convertase subtilisin/kexin type 9; Q1, 25th percentile; Q3, 75th percentile; Q4W, every 4 weeks; SD, standard deviation; SOC, standard of care; VLDL-C, very low-density lipoprotein cholesterol.

Supplemental Table S3. Percentage Change from Baseline of Phase 2 Parent Study to Week 52 for Lipid Values

	Not Evolocumab in Phase 2 Parent Study		Evolocumab in Phase 2 Parent Study		All	
	Evolocumab 420 mg Q4W		Evolocumab 420 mg Q4W		Evolocumab 420 mg Q4W	
	SOC (N=96)	+ SOC (N=192)	SOC (N=272)	+ SOC (N=544)	SOC (N=368)	+ SOC (N=736)
LDL-C by ultracentrifugation, mean (SE)	-1.7 (2.7)	-52.3 (1.8)	-2.8 (1.5)	-52.1 (1.0)	-2.5 (1.3)	-52.1 (0.9)
LDL-C (calculated), mean (SE)	-2.6 (2.8)	-54.7 (1.9)	-3.5 (1.5)	-55.1 (1.0)	-3.2 (1.3)	-55.0 (0.9)
Total cholesterol, mean (SE)	-0.5 (1.8)	-32.5 (1.4)	-1.5 (1.0)	-33.0 (0.7)	-1.2 (0.9)	-32.9 (0.7)
HDL-C, mean (SE)	3.5 (1.6)	8.5 (1.2)	3.7 (1.1)	9.1 (0.8)	3.6 (0.9)	9.0 (0.7)
Non-HDL-C, mean (SE)	-1.2 (2.4)	-45.9 (1.8)	-2.8 (1.3)	-46.5 (0.9)	-2.4 (1.2)	-46.4 (0.8)
Total cholesterol/HDL-C ratio, mean (SE)	-2.3 (2.3)	-36.9 (1.5)	-3.1 (1.5)	-37.5 (0.8)	-2.9 (1.2)	-37.4 (0.7)
VLDL-C, median (Q1, Q3)	11.6 (-17.2, 46.7)	-14.7 (-35.0, 16.9)	-4.2 (-31.5, 37.3)	-18.8 (-40.5, 13.3)	0.0 (-28.6, 38.1)	-17.7 (-39.1, 14.0)
ApoB, mean (SE)	-4.2 (2.0)	-42.1 (1.6)	-3.6 (1.2)	-42.6 (0.8)	-3.7 (1.0)	-42.5 (0.7)
ApoA1, mean (SE)	0.9 (1.3)	3.6 (0.9)	0.1 (0.8)	4.9 (0.6)	0.3 (0.7)	4.6 (0.5)
ApoB/ApoA1 ratio, mean (SE)	-4.2 (2.2)	-43.7 (1.6)	-2.5 (1.5)	-44.7 (0.9)	-3.0 (1.2)	-44.4 (0.8)
Triglycerides, median (Q1, Q3)	3.7 (-17.1, 34.2)	-8.3 (-23.1, 10.5)	-1.4 (-18.6, 19.5)	-9.0 (-24.5, 15.3)	1.4 (-17.7, 21.5)	-8.6 (-24.0, 14.3)
Lp(a), median (Q1, Q3)	-11.1 (-31.8, 3.6)	-32.8 (-50.0, -16.5)	-8.7 (-23.4, 0.0)	-29.9 (-50.0, -11.1)	-9.3 (-25.0, 0.0)	-30.1 (-50.0, -12.5)

ApoB, apolipoprotein B; ApoA1, apolipoprotein A1; HDL-C, high-density lipoprotein cholesterol; LDL-C, low-density lipoprotein cholesterol; Lp(a), lipoprotein (a); Q1, 25th percentile; Q3, 75th percentile; Q4W, every 4 weeks; SE, standard error; SOC, standard of care; VLDL-C, very low-density lipoprotein cholesterol.

Supplemental Table S4. Adverse Events Leading to Discontinuation of Investigational Product

MedDRA System Organ Class Preferred Term	Evolocumab 420 mg Q4W + SOC (N=736) n(%)
Number of patients reporting AE leading to discontinuation of investigational product (Evolocumab)	27 (3.7)
Blood and lymphatic system disorders	
Anemia	1 (0.1)
Gastrointestinal disorders	
Constipation	1 (0.1)
Diarrhea	2 (0.3)
Pancreatitis	1 (0.1)
General disorders and administration site conditions	
Application site erythema	1 (0.1)
Fatigue	1 (0.1)
Influenza like illness	1 (0.1)
Malaise	1 (0.1)
Infections and infestations	
Bed bug infestation	1 (0.1)
Rhinitis	1 (0.1)
Investigations	
Alanine aminotransferase increased	1 (0.1)
Blood creatine phosphokinase increased	1 (0.1)
Metabolism and nutrition disorders	
Gout	1 (0.1)
Hyponatremia	1 (0.1)
Musculoskeletal and connective tissue disorders	
Arthralgia	3 (0.4)
Myalgia	2 (0.3)
Neoplasms benign, malignant, and unspecified (including cysts and polyps)	
Intraductal proliferative breast lesion	1 (0.1)
Nervous system disorders	
Dizziness	1 (0.1)
Headache	1 (0.1)
Lethargy	1 (0.1)
Memory impairment	1 (0.1)
Migraine	1 (0.1)
Paraesthesia	1 (0.1)
Syncope	1 (0.1)
Wernicke's encephalopathy	1 (0.1)
Pregnancy, puerperium and perinatal conditions	
Abortion spontaneous	1 (0.1)
Psychiatric disorders	
Alcohol withdrawal syndrome	1 (0.1)
Reproductive system and breast disorders	
Erectile dysfunction	1 (0.1)
Respiratory, thoracic and mediastinal disorders	
Dyspnea	1 (0.1)
Skin and subcutaneous tissue disorders	
Alopecia	1 (0.1)
Angioedema	1 (0.1)
Pruritus generalized	1 (0.1)
Vascular disorders	
Hematoma	1 (0.1)
Hypotension	1 (0.1)
Peripheral coldness	1 (0.1)

Some patients had more than 1 AE leading to discontinuation.

Supplemental Table S5. OSLER Patients with CK Elevations > 10xULN

Patient	Treatment Group	With or Without IP Discontinuation	Resolution	Confounding Factors
1	SOC	NA	Unknown, patient did not return for follow-up.	Fall
2	SOC	NA (continued statin use)	Yes, repeat CK 8 days later was normal.	Strenuous exercise/ Weight training
3	Evolocumab+ SOC	Without	Yes, repeat CK 6 days later was 332 U/L.	No clear reason
4	Evolocumab+ SOC	With and without	No, after withholding all exercise for 72 hours, his CK levels were rechecked and remained unchanged. The CK levels did not normalize despite stopping evolocumab. Upon subsequent discontinuation of simvastatin, the patient's CK levels rose further, prompting additional investigation which indicated no evidence of myopathy as the probable cause of persistent CK elevation. This event was adjudicated as negative for a muscle event by the CEC.	Strenuous exercise/ Weight training

CK, creatine kinase; NA, not applicable; SOC, standard of care.
 All CK elevations were asymptomatic.